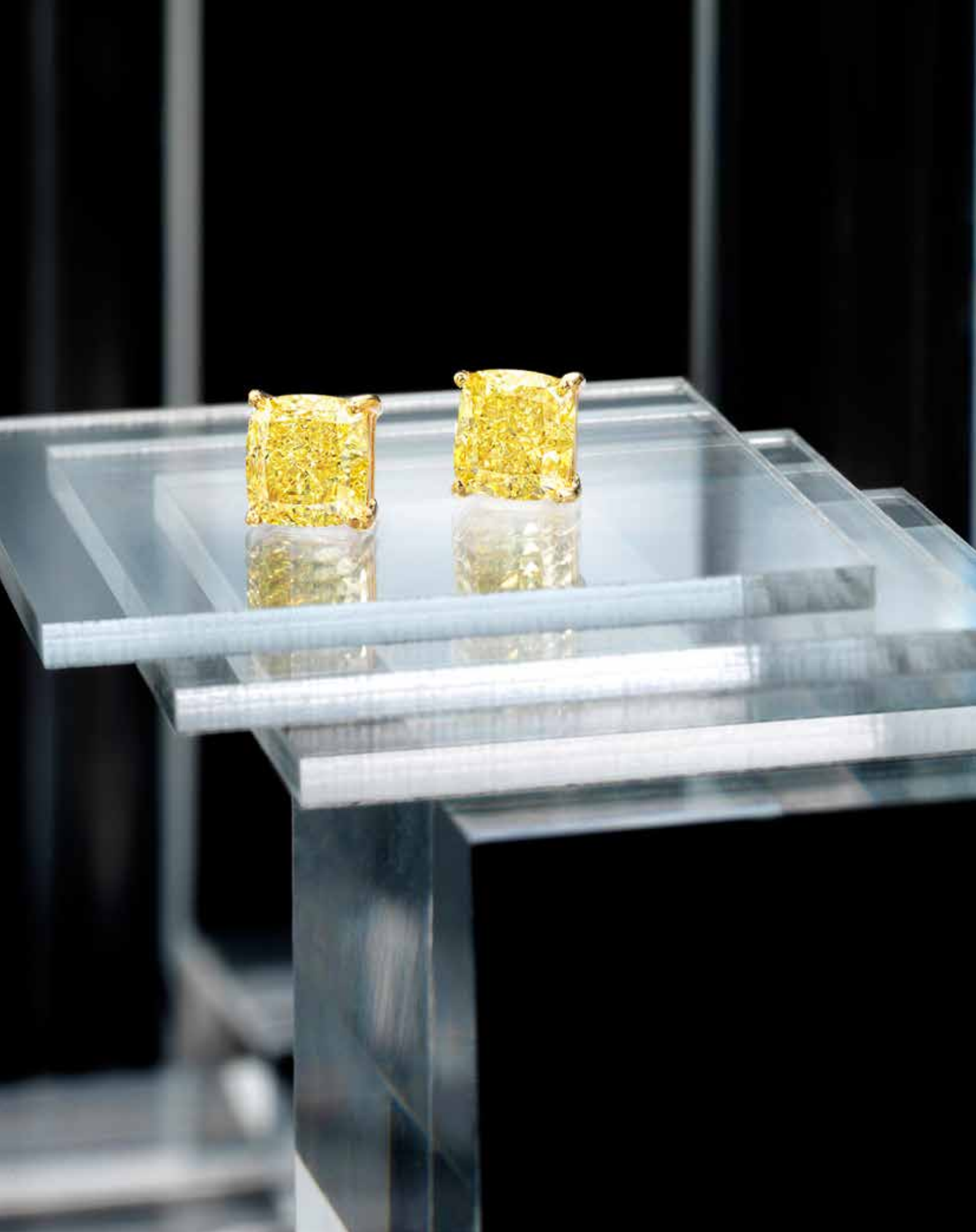


Bonhams



Fine Jewelry

New York | December 3, 2018



Fine Jewelry

New York | Monday December 3, 2018 at 2pm

BONHAMS

580 Madison Avenue
New York, New York 10022
bonhams.com

PREVIEW

Los Angeles

November 15, 2018, 12pm to 5pm
November 16, 2018, 12pm to 5pm
November 17, 2018, 12pm to 5pm
November 18, 2018, 12pm to 5pm

(Highlights will be unavailable for viewing on Sunday 18 November 2018)

Hong Kong - Highlights

November 21, 2018, 3pm to 7pm
November 22, 2018, 10am to 7pm
November 23, 2018, 10am to 7pm
November 24, 2018, 10am to 5pm

New York

November 29, 2018, 10am to 5pm
November 30, 2018, 10am to 5pm
December 1, 2018, 12pm to 5pm
December 2, 2018, 12pm to 5pm

SALE NUMBER:

24868

CATALOG: \$35.00

CUSTOMS DUTY

Customs Duty at the applicable rate and associated import fees are payable by the buyer on all lots marked with an omega symbol (Ω).

BIDS

+1 (212) 644 9001
+1 (212) 644 9009 fax
bids.us@bonhams.com

To bid via the internet please visit www.bonhams.com

TELEPHONE BIDDING

Telephone bidding will only be accepted on a lot with a lower estimate in excess of \$1000.

Please note that bids should be submitted no later than 24hrs prior to the sale. New Bidders must also provide proof of identity when submitting bids. Failure to do this may result in your bid not being processed.

LIVE ONLINE BIDDING IS AVAILABLE FOR THIS SALE

Please email bids.us@bonhams.com with "Live bidding" in the subject line 48hrs before the auction to register for this service.

Please see pages 76 to 79 for bidder information including conditions of sale, after-sale collection and shipment.

INQUIRIES

New York

Brett O'Connor, Senior International Jewelry Director
Caroline Morrissey, Head of Sales, US Jewelry
Camille Barbier, G.G.

ADMINISTRATOR

Catherine Roehre
catherine.roehre@bonhams.com
+1 (212) 461 6526

Jean Ghika

Global Head of Jewelry
jean.ghika@bonhams.com

Los Angeles

Dana Ehrman, Director, LA Jewelry, G.G.
Alexis Vourvoulis, G.G.
Emily Waterfall
+1 (323) 436 5424

San Francisco

Shannon Beck, G.G.
Senior Specialist
+1 (415) 503 3306

COLLECTION

Successful buyers with San Francisco and Los Angeles shipping addresses will have their purchases shipped to that office for pick-up. If you have a San Francisco or Los Angeles shipping address and do not want your purchase sent there for collection please notify us directly by Tuesday December 4, 2018. Purchases will be available for pick-up in San Francisco and Los Angeles on Thursday, December 6.

ILLUSTRATIONS

Front cover: lot 121
Inside front cover: lot 85
Current page: lot 7
Session page: lot 64
Back cover: lot 120
Inside back cover: lot 110

REGISTRATION IMPORTANT NOTICE

Please note that all customers, irrespective of any previous activity with Bonhams, are required to complete the Bidder Registration Form in advance of the sale. The form can be found at the back of every catalogue and on our website at www.bonhams.com and should be returned by email or post to the specialist department or to the bids department at bids.us@bonhams.com

To bid live online and / or leave internet bids please go to www.bonhams.com/auctions/24868 and click on the Register to bid link at the top left of the page.



Bonhams

© 2018, Bonhams & Butterfields Auctioneers Corp.; All rights reserved.
Bond No. 57BSBGL0808
Principal Auctioneer: Matthew Girling,
License No. 1236798-DCA

INCLUDING PROPERTY FROM

Property from the Estate of William and Diana Lewis Powell
Property from the Estate of a Colorado Artist
Property of a New York Gentleman
Property formerly from a New York Socialite



INDEX

NAME	LOT NUMBER
Atelier Rudlier	8
Boucheron.....	20, 22, 23, 36
Buccellati.....	18, 42
Bulgari.....	55, 69
Cartier	9, 52
David Webb.....	1, 6, 7, 29, 40
Harry Winston.....	13
Jean Schlumberger	3
John Rubel.....	10
Lugano.....	30
Mario Buccellati	42
Oscar Heyman	117
Royal De Versailles	98
Simon Rudel.....	12
Tiffany & Co.....	3, 105
Van Cleef & Arpels.....	21
Vittorio B.....	64



follow us at [#bonhamsjewels](#)

DIAMOND GRADING

COLOR

GIA	CIBJO	UK TRADITIONAL
D	Exceptional White +	Finest White
E	Exceptional White	Finest White
F	Rare White +	Fine White
G	Rare White	Fine White
H	White	White
I	Slightly Tinted White	Commercial White
J	Slightly Tinted White	Top Silver Cape
K	Tinted White	Top Silver Cape
L	Tinted White	Silver Cape
M TO N	Tinted Color	Light Cape
O TO R	Tinted Color	Cape
R TO Z	Tinted Color	Dark Cape

CLARITY

IF	Internally Flawless	No inclusions and only insignificant surface blemishes when viewed under 10X magnification
VVS1 - VVS2	Very Very Slightly Included	Minute inclusions that are incredibly difficult to see under 10X magnification, generally only visible from the back of the stone and may be removed easily by repolishing
VS1 - VS2	Very Slightly Included	Minor inclusions that range from difficult (VS1) to slightly easier (VS2) to see under 10X magnification
S11 - 2	Slightly Included	Noticeable inclusions that are easy (S11) or very easy (S12) to see under 10X magnification
I1 - 3	Obvious Inclusions	Obvious inclusions that are easily visible under 10X magnification and in some cases may even be seen without magnification

RING SIZES

ENGLISH	METRIC	AMERICAN	FRENCH/JAPANESE
A	37.8252	½	-
A½	38.4237	¾	-
B	39.0222	1	-
B½	39.6207	1¼	-
C	40.2192	1½	-
C½	40.8177	1¾	-
D	41.4162	2	1
D½	42.0147	2¼	2
E	42.6132	2½	-
E½	43.2117	2¾	3
F	43.8102	3	4
F½	44.4087	3¼	-
G	45.0072	3½	5
G½	45.6057	3¾	-
H	46.2042	4	6
H½	46.8027	4¼	-
I	47.4012	4½	7
I½	47.9997	4¾	8
J	48.5982	5	-
J½	49.1967	5¼	9
K	49.7952	5½	10
K½	50.3937	5¾	-
L	50.9922	6	11
L½	51.5907	6¼	-
M	52.1892	6½	12
M½	52.7877	6¾	13
N	53.4660	7	-
N½	54.1044	7¼	14
O	54.7428	7½	15
O½	55.3812	7¾	-
P	56.0196	8	16
P½	56.6580	8¼	-
Q	57.2964	8½	17
Q½	57.9348	8¾	18
R	58.5732	9	-
R½	59.2116	9¼	19
S	59.8500	9½	20
S½	60.4884	9¾	-
T	61.1268	10	21
T½	61.7652	10¼	22
U	62.4026	10½	-
U½	63.0420	10¾	23
V	63.6804	11	24
V½	64.3188	11¼	-
W	64.8774	11½	25
W½	65.4759	11¾	-
X	66.0744	12	26
X½	66.6729	12¼	-
Y	67.2714	12½	-
Y½	67.8699	12¾	-
Z	68.4684	13	-



1



3



2

**PROPERTY FROM THE ESTATE OF
WILLIAM AND DIANA LEWIS POWELL**

1
A DIAMOND RING, DAVID WEBB
of geometric design, the central scrolls set with round brilliant-cut diamonds; *signed Webb*; *estimated total diamond weight: 2.75 carats*; *gross weight approximately: 31.15 grams*; *mounted in platinum and 18k gold*; size 6

\$4,000 - 7,000

PROPERTY OF VARIOUS COLLECTORS

2
A DIAMOND SOLITAIRE RING
centering an emerald-cut diamond, weighing 4.03 carats; *mounted in platinum*; size 5 3/4

\$15,000 - 20,000

Accompanied by GIA report # 2175625991, dated June 28, 2018, stating the diamond as: K color, VS2 clarity.

3
**A PAIR OF DIAMOND AND ENAMEL
EARCLIPS, JEAN SCHLUMBERGER
FOR TIFFANY & CO.**
designed as a green paillonné enamel half hoops, enhanced by polished gold lines and round brilliant-cut diamond stud accents; *signed Tiffany & Co. Schlumberger, France*; *mounted in 18k gold*; *length: 1 1/16in.*

\$6,000 - 8,000



4

5

6

4
AN 18K BI-COLORED GOLD AND DIAMOND BRACELET
 of roped gold design, centrally set with old European and round brilliant-cut diamonds; further accented by bezel-set diamonds of similar cut; *estimated total diamond weight: 4.75 carats; gross weight approximately: 94.55 grams; length: 7 1/2in.*

\$4,000 - 7,000

5
A FANCY COLORED DIAMOND AND DIAMOND RING
 centering a cushion-shaped modified brilliant-cut Fancy Dark Brown-Greenish Yellow diamond, weighing 5.03 carats, accented by fancy-shaped fancy colored diamonds and round brilliant-cut diamonds; *estimated remaining diamond weight: 1.90 carats; mounted in platinum and 18k gold; size 6 (colored diamonds untested for origin of color)*

\$10,000 - 15,000

Accompanied by GIA report # 2186392299, dated October 13, 2014, stating the diamond as: Fancy Dark Brown-Greenish Yellow color, VS2 clarity.

PROPERTY FROM THE ESTATE OF WILLIAM AND DIANA LEWIS POWELL

6
A TIGER'S EYE AND DIAMOND RING, DAVID WEBB
 of bombé form, accented with round brilliant-cut diamonds; *signed Webb; estimated total diamond weight: 1.15 carats; mounted in platinum and 18k gold; size 5 3/4*

\$3,000 - 5,000



7



9



8

PROPERTY OF VARIOUS COLLECTORS

7 Y

A CORAL, DIAMOND, SAPPHIRE, EMERALD AND ENAMEL “JUNE BUG” BROOCH, DAVID WEBB

the body set with coral, adorned with round brilliant-cut diamonds, to a black enamel head with oval-shaped sapphire accents, and circular-shaped cabochon emerald eyes; signed Webb; mounted in platinum and 18k gold; length: 2 1/16in.

\$3,500 - 5,500

8

A DIAMOND BRACELET, ATELIER RUDLIER

of articulated bombé design, set with twelve panels accented by round brilliant-cut diamonds; signed A.R.; estimated total diamond weight: 29.25 carats; mounted in platinum and 18k gold; length: 6 1/2in.

\$20,000 - 30,000

9

A 14K BI-COLORED GOLD AND DIAMOND CLIP, CARTIER, CIRCA 1940

of scroll design, accented by old European-cut diamonds; signed Cartier; estimated total diamond weight: 2.35 carats; gross weight approximately: 21.95 grams; length: 1 3/8in.

\$5,000 - 7,000



10

PROPERTY FROM THE ESTATE OF WILLIAM AND DIANA LEWIS POWELL

10
AN 18K GOLD, DIAMOND AND GEM-SET BROOCH AND EARCLIP SUITE, JOHN RUBEL, CIRCA 1900
 of floral motif, set throughout with circular-shaped rubies and sapphires, accented by circular-shaped cabochon turquoise, with round brilliant-cut diamond highlights, with articulated textured gold leaves, earclips of similar design; *signed John Rubel Co.*; *estimated total diamond weight: 1.10 carats; gross weight approximately: 82.05 grams; clip width: 2 1/2in.; earclip width: 1 1/8in.*

\$5,000 - 7,000



Diana Lewis Powell



11

PROPERTY OF VARIOUS COLLECTORS

11
A PAIR OF ART NOUVEAU 18K GOLD, OPAL AND ENAMEL EARCLIPS, CIRCA 1900
 designed with outspread pique-à-jour wing tops, suspending articulated drop-shaped opals; *accompanied by fitted box; gross weight approximately: 8.58 grams; length: 1 9/16in.*

\$5,000 - 8,000



12

13

12

A SAPPHIRE AND DIAMOND RING, SIMON RUDLE

centering a circular-shaped sapphire, weighing approximately 1.80 carats, framed by round brilliant-cut diamonds, to a removable outer fitting, set throughout with similarly cut diamonds; *signed S.R.*; *estimated total diamond weight: 4.70 carats; mounted in 18k gold; size 6 1/4*

\$5,000 - 7,000

13

A SAPPHIRE, CULTURED PEARL AND DIAMOND NECKLACE/ BRACELET, HARRY WINSTON

comprising a pendant necklace, centering a rectangular-shaped emerald-cut sapphire, weighing approximately 24.30 carats, within a surround of round brilliant-cut diamonds, accented by pear-shaped diamonds, to a pear-shaped sapphire and round brilliant-cut diamond surmount, suspended by a multi-strand of cultured pearls, with detachable bracelet; *signed Winston, no.9158, with maker's mark for Jacques Timey; estimated total diamond weight: 7.45 carats; mounted in 18k gold; necklace length: 24 1/2in.; bracelet length 7in.*

\$50,000 - 70,000

Accompanied by AGL report # CS 53722, dated March 14, 2013, stating the sapphire as: Ceylon (Sri Lankan) origin, no indications of heat or clarity enhancement.



14



15



16

14

A PAIR OF DIAMOND EARRINGS

of bombé form, pavé-set throughout with round brilliant-cut diamonds; *estimated total diamond weight: 13.50 carats; mounted in platinum; width: 3/4in.*

\$7,000 - 10,000

15

A DIAMOND AND SAPPHIRE RING

of bombé form, set with round brilliant-cut diamonds, accented by oval-shaped sapphires; *with French assay mark; estimated total diamond weight: 2.50 carats; mounted in 18k gold; size 6 1/2*

\$4,000 - 7,000

16

A DIAMOND SOLITAIRE RING

centering a round brilliant-cut diamond, weighing 2.20 carats; *mounted in 14k white gold; size 7 1/4*

\$12,000 - 18,000

Accompanied by GIA report # 2166850565, dated February 10, 2014, stating the diamond as: H color, VS1 clarity.





17

17
A SAPPHIRE AND DIAMOND RING

centering a square cushion-shaped mixed-cut sapphire, weighing 5.25 carats, within an octagonal frame set with round brilliant-cut diamonds; further accented by single-cut diamonds; *estimated total diamond weight: 1.50 carats; mounted in platinum and 14k gold; size 5 1/2*

\$15,000 - 20,000

Accompanied by AGL report # 1094666, dated August 24, 2018, stating the sapphire as: Ceylon (Sri Lanka) origin, no indications of heat or clarity enhancement.



18

18
AN 18K GOLD AND DIAMOND CUFF, BUCCELLATI, CIRCA 1960

of textured hinged back design, accented by floral motifs set with single and rose-cut diamonds; *signed Buccellati; accompanied by signed box; estimated total diamond weight: 1.10 carats; gross weight approximately: 42.80 grams; circumference: 7in.*

\$20,000 - 30,000

Known for extraordinary metal work and a distinct style, the legendary Italian jewelry firm Buccellati has a long pedigree of gold and silversmithing dating back to the 19th century. One of the most well-known styles, they are recognized for is the engraving technique *rigato*, which are parallel lines cut onto the surface of gold to obtain a sheen effect. This bangle by Buccellati implements the *rigato* technique on the curved yellow gold surface, then accented by stunning diamond fleurettes. Dating from the 1950s, this would have been made during the time of Mario Buccellati and jewels from this time period aren't regularly seen at auction, making this bangle a great addition to any collection.



19

19

A RUBY AND DIAMOND RING

of floral design, centering an oval-shaped brilliant step-cut ruby, weighing 3.07 carats, accented by pear-shaped diamonds, within a single-cut diamond setting; *estimated total diamond weight: 3.00 carats; mounted in 18k rose gold; size 5 1/2*

\$65,000 - 95,000

Accompanied by Gubelin report # 14081003, dated August 12, 2014, stating the ruby as: Burmese (Myanmar) origin, no indications of heating.

Accompanied by GRS report # 2013-090201, dated September 5, 2013, stating the ruby as: Burmese (Myanmar) origin, "pigeon's blood", no indications of thermal treatment.

20

20

AN 18K GOLD, DIAMOND AND RUBY NECKLACE, BOUCHERON, CIRCA 1960

of articulated foliate design, centrally set with a line of circular-shaped rubies and round brilliant-cut diamonds; *signed Boucheron, Paris, no.58.466, with French assay marks; estimated total diamond weight: 2.25 carats; gross weight approximately: 123.10 grams; length: 16 3/4in.*

\$12,000 - 18,000



22



23



21

21
A DIAMOND AND RUBY RING, VAN CLEEF & ARPELS
of raised design, set with round brilliant-cut diamonds, accented by square-shaped cabochon rubies; *signed Van Cleef & Arpels, no.NY 56801, with French assay marks; accompanied by signed box; estimated total diamond weight: 1.75 carats; mounted in 18k gold; size 7 3/4*

\$6,000 - 8,000

22
AN 18K GOLD, DIAMOND AND RUBY BRACELET, BOUCHERON, CIRCA 1960
of foliate design, with a highly flexible textured gold band, centrally set with a line of circular-shaped rubies and round brilliant-cut diamonds; *signed Boucheron, no.6.632, Paris, with French assay marks; estimated total diamond weight: 1.55 carats; gross weight approximately: 67.00 grams; length: 7 3/8in.*

\$10,000 - 15,000

23
A PAIR OF 18K GOLD, DIAMOND AND RUBY PENDANT EARCLIPS, BOUCHERON, CIRCA 1960
of articulated foliate design, centrally set with a line of circular-shaped rubies and round brilliant-cut diamonds; *signed Boucheron, Paris, no.36.214, with French assay marks; estimated total diamond weight: 1.00 carat; gross weight approximately: 30.10 grams; length: 2 5/16in.*

\$5,000 - 7,000



24



25

24

A DIAMOND SOLITAIRE RING

centering a round brilliant-cut diamond, weighing 2.01 carats;
mounted in 14k white gold; size 7 1/4

\$12,000 - 18,000

Accompanied by GIA report # 5176128231, dated March 28, 2014,
stating the diamond as: D color, SI1 clarity.

25

**AN 18K GOLD AND DIAMOND NECKLACE AND BRACELET
SUITE, CIRCA 1955**

of mesh design, centering round brilliant-cut diamond accents;
*gross weight approximately: 121.70 grams; necklace length:
15 1/2in.; bracelet length: 6 3/4in.*

\$3,000 - 5,000



26

27

26

A FANCY COLORED DIAMOND AND DIAMOND NECKLACE
set with forty alternating fancy-shaped and round brilliant-cut fancy colored and colorless diamonds; *estimated total diamond weight: 55.35 carats; mounted in platinum and 18k gold; length: 18in.*

\$25,000 - 35,000

Accompanied by twenty-three GIA reports. Please contact the jewelry department for copies.

27

A FANCY COLORED DIAMOND RING
centering a round brilliant-cut Fancy Brownish Yellow diamond, weighing 5.00 carats, accented by similarly cut colored diamonds; *estimated remaining diamond weight: 3.55 carats; gross weight approximately: 21.40 grams; mounted in 18k gold; size 6 1/2 (remaining colored diamonds untested for origin of color)*

\$10,000 - 15,000

Accompanied by GIA report # 2155319280, dated March 21, 2013, stating the diamond as: Fancy Brownish Yellow color, VVS2 clarity.



28

29

28

AN 18K GOLD NECKLACE, CIRCA 1960

of articulated design, centering an abstract knot; *with French assay mark; gross weight approximately: 99.60 grams; length: 14 11/16in.*

\$3,000 - 5,000

PROPERTY FROM THE ESTATE OF WILLIAM AND DIANA LEWIS POWELL

29

A CHRYSOPRASE AND DIAMOND RING, DAVID WEBB

centrally set with an oval-shaped cabochon chrysoprase, accented by round brilliant-cut diamonds; *signed Webb; gross weight approximately: 39.20 grams; mounted in platinum and 18k gold; size 5 1/4*

\$3,000 - 5,000



30



31

PROPERTY OF VARIOUS COLLECTORS

30

A PAIR OF DEMANTOID AND DIAMOND PENDANT EARCLIPS, LUGANO

the surmounts set with circular and oval-shaped demantoids, accented by rose and round brilliant-cut diamonds, suspending an openwork oval-shaped pendant, set throughout with similarly cut demantoids and diamonds; *signed Lugano; estimated total diamond weight: 4.95 carats; mounted in 18k gold; length: 2 1/4in.*

\$12,000 - 18,000

31

A 14K ROSE GOLD AND DIAMOND BANGLE

of openwork design, centrally set with two round brilliant-cut diamonds, each weighing 0.90 carat; *gross weight approximately: 25.50 grams; length: 7in.*

\$5,000 - 8,000

Accompanied by GIA report # 6231187586, dated July 15, 2016, stating the 0.90 carat diamond as: D color, SI1 clarity.

Accompanied by GIA report # 7243377145, dated December 5, 2016, stating the 0.90 carat diamond as: E color, SI1 clarity.



32

33



34



35

32

A STAR SAPPHIRE AND DIAMOND RING

centering an oval-shaped double cabochon star sapphire, weighing approximately 14.85 carats, accented by baguette-cut diamonds; mounted in 18k gold; size 8

\$15,000 - 25,000

Accompanied by AGL report # 1094035, dated July 26, 2018, stating the sapphire as: Burmese (Myanmar) origin, no indications of heat or clarity enhancement.

33

AN 18K BI-COLORED GOLD AND DIAMOND NECKLACE

of openwork design, alternating with polished gold and pavé-set round brilliant-cut diamond links; *estimated total diamond weight: 4.80 carats; gross weight approximately: 113.60 grams; length: 36 3/8in.*

\$4,000 - 7,000

34

A PAIR OF DIAMOND AND COLORED DIAMOND PENDANT EARRINGS

the surmount of cluster design, set with fancy-shaped diamonds, to an openwork circular hoop, set with round brilliant-cut colored and colorless diamonds, suspending articulated tassels, set with marquise, pear, baguette and round brilliant-cut colored and colorless diamonds; *estimated total diamond weight: 11.00 carats; mounted in 18k bi-colored gold; length: 2 7/8in. (colored diamonds untested for origin of color)*

\$15,000 - 20,000

35

A FANCY COLORED DIAMOND AND DIAMOND BRACELET

of snake design, the head centering a pear-shaped brilliant-cut Fancy Dark Yellowish Brown diamond, weighing 10.02 carats, accented by round brilliant-cut diamonds, to a flexible band set throughout with similarly cut colored diamonds; *estimated remaining diamond weight: 19.95 carats; mounted in 18k gold; length: 6 1/2in. (remaining colored diamonds untested for origin of color)*

\$15,000 - 25,000

Accompanied by GIA report # 2175282848, dated August 19, 2015, stating the diamond as: Fancy Dark Yellowish Brown color, I1 clarity.



36

37

36
A DIAMOND NECKLACE AND EARRING SUITE, BOUCHERON
 the necklace composed of pavé-set round brilliant-cut diamond sections, set in the center with a similarly cut diamond, weighing approximately 2.10 carats, within a baguette and round brilliant-cut diamond setting, accompanied by earrings of similar design; *signed Boucheron, no.70542, with maker's mark and French assay marks; accompanied by a signed folder; estimated remaining diamond weight: 24.65 carats; mounted in 18k gold; length: 14in.*

\$50,000 - 70,000

37
AN EMERALD AND DIAMOND RING
 centering an oval-shaped brilliant modified step-cut emerald, weighing 5.17 carats, within a fancy-shaped and baguette-cut diamond setting; *estimated total diamond weight: 2.25 carats; mounted in 18k gold; size 7 1/4*

\$10,000 - 15,000

Accompanied by GIA report # 6157921664, dated February 11, 2014, stating the emerald as: indications of clarity enhancement.



38

39

38

A FANCY COLORED DIAMOND NECKLACE

set with sixty-two cushion-shaped fancy colored diamonds; *estimated total diamond weight: 33.00 carats; mounted in 18k gold; length: 18in.*

\$7,000 - 10,000

Accompanied by thirty-eight GIA reports. Please contact the jewelry department for copies.

39

A FANCY COLORED DIAMOND AND DIAMOND RING

centering a cut-cornered rectangular-shaped modified brilliant-cut Fancy Light Yellow diamond, weighing 2.37 carats, flanked by bullet-shaped diamonds; *mounted in platinum and 18k gold; size 5 3/4*

\$3,500 - 5,500

Accompanied by GIA report # 2175199534, dated June 11, 2015, stating the diamond as: Fancy Light Yellow color.



Diana Lewis Powell, Mary Martin and friends



PROPERTY FROM THE ESTATE OF WILLIAM AND DIANA LEWIS POWELL

40^Y

A MABÉ PEARL AND DIAMOND RING, DAVID WEBB

centering a mabé pearl, measuring approximately: 19.4mm, accented by round brilliant-cut diamonds; *signed Webb*; gross weight approximately: 36.55 grams; mounted in platinum and 18k gold; size: 6 1/4

\$3,000 - 5,000

PROPERTY OF VARIOUS COLLECTORS

41

A DIAMOND SOLITAIRE PENDANT

set with an old European-cut diamond, weighing 7.56 carats; *mounted in white metal*; length: 17 1/2in.

\$18,000 - 25,000

42

A SILVER-TOPPED 18K GOLD AND DIAMOND BANGLE, MARIO BUCCELLATI

composed of finely pierced foliate motifs, highlighted by round brilliant and old European-cut diamonds; *signed M. Buccellati, with Italian maker's mark*; estimated total diamond weight: 6.25 carats; gross weight approximately: 81.99 grams; length: 6 3/4in.

\$20,000 - 30,000



43



43

**AN ANTIQUE RUBY, DIAMOND,
AND PEARL BROOCH, CIRCA 1890**

of scroll design, set with oval-shaped rubies, enhanced by old mine and old European-cut diamonds, with seed pearl accents, suspending three articulated strands, set with button-shaped pearls, to oval-shaped rubies, accented by rose and old mine-cut diamonds; *estimated total diamond weight: 2.50 carats; mounted in 14k gold; length: 2 1/8in.*

\$8,000 - 12,000

Accompanied by GIA report # 2155189832, dated January 24, 2013, stating the largest central ruby as: Burmese (Myanmar) origin, no indications of heating.



45



44

44

A DIAMOND "TOI ET MOI" RING

centering old mine-cut diamonds, weighing 2.56 and 2.50 carats, accented by single-cut diamonds; *mounted in platinum and 18k gold; size 6 1/4*

\$15,000 - 20,000

45

A RUBY AND DIAMOND RING

centering a cushion-shaped brilliant step-cut ruby, weighing 4.97 carats, flanked by old European-cut diamonds; *estimated total diamond weight: 1.90 carats; mounted in 18k bi-colored gold; size 6 1/4*

\$75,000 - 95,000

Accompanied by AGL report # 1096701, dated October 30, 2018, stating the ruby as: Burmese (Myanmar) origin, no indications of heat or clarity enhancement.



46

A SAPPHIRE AND DIAMOND RING, CIRCA 1900

centering a square cushion-shaped mixed-cut sapphire, weighing 3.00 carats, flanked by old European-cut diamonds; *estimated total diamond weight: 1.55 carats; mounted in 14k gold; size 3 1/4*

\$18,000 - 25,000

Accompanied by AGL report # 1095466, dated October 11, 2018, stating the sapphire as: Kashmir origin, no indications of heat or clarity enhancement.





47

**47
A DIAMOND RING**

centering an old mine-cut diamond, weighing 3.61 carats; accented by round brilliant-cut diamonds; *mounted in white metal; size 6 3/4in.*

\$8,000 - 12,000

48

**48
A DIAMOND NECKLACE**

the front designed as a series of foliate motifs, set with old mine and old European-cut diamonds, to a row of similarly cut graduated diamonds; *estimated total diamond weight: 20.50 carats; mounted in platinum; length: 15 11/16in.*

\$12,000 - 18,000



49



50

49

A DIAMOND AND SAPPHIRE NECKLACE

the openwork foliate detailing, set throughout with old European-cut diamonds, the largest weighing approximately 1.50 carats, accented with oval-shaped cabochon sapphires, the chain interspersed with old European-cut diamonds; *estimated remaining diamond weight: 5.00 carats; mounted in platinum; length: 17 1/8in.*

\$8,000 - 12,000

Accompanied by AGL report # CS 1073379, dated February 18, 2016, stating the sapphires as: Cambodian (Pailin) origin, no indications of heat or clarity enhancement.

50

A DIAMOND BROOCH

of open work design, centrally set with five old European-cut diamonds, accented by a fancy-shaped diamond, further set with old European and single-cut diamonds; *estimated total diamond weight: 7.50 carats; mounted in platinum; length: 2in.*

\$3,000 - 5,000

PROPERTY OF A NEW YORK GENTLEMAN



51

52

PROPERTY OF VARIOUS COLLECTORS

51
A RETRO DIAMOND BRACELET, CIRCA 1950
of abstract scroll design, set throughout with round brilliant-cut diamonds, interspersed with baguette and round brilliant-cut diamond panels; *estimated total diamond weight: 25.50 carats; mounted in platinum; length: 7 1/8in.*

\$18,000 - 25,000

52
AN ART DECO ROCK CRYSTAL AND DIAMOND CLIP BROOCH, CARTIER, CIRCA 1925
the plaque of geometric shield-shape design, set with carved rock crystal and round brilliant-cut diamonds; *signed Cartier, no.3469; accompanied by a signed box; estimated total diamond weight: 1.65 carats; mounted in platinum; length: 1 1/8in.*

\$20,000 - 30,000





54



53



55

53
A PAIR OF DIAMOND EARRINGS
of bombé form, pavé-set with round brilliant-cut diamonds; *estimated total diamond weight: 22.80 carats; mounted in 18k white gold; width: 1in.*

\$18,000 - 25,000

54
A SAPPHIRE AND DIAMOND RING
centering a rectangular cushion-shaped brilliant step-cut sapphire, weighing 11.65 carats, flanked by tapered baguette-cut diamonds; *estimated total diamond weight: 1.10 carats; mounted in platinum; size 7 1/2*

\$22,000 - 26,000

Accompanied by GRS report # 2016-021706, dated February 26, 2016, stating the sapphire as: Burmese (Myanmar) origin, no indications of heat.

55
A DIAMOND AND ONYX "DIVA DREAM" BANGLE, BVLGARI
of triangular bombé form, alternating with black onyx and round brilliant-cut diamond plaques; *signed Bvlgari, no.EAWYZN; estimated total diamond weight: 9.00 carats; mounted in 18k gold; circumference: 6 1/8in.*

\$25,000 - 35,000

56

AN EMERALD AND DIAMOND RING

centering a square-shaped emerald-cut emerald, weighing 8.32 carats, within a round brilliant-cut diamond surround; *estimated total diamond weight: 3.50 carats; mounted in platinum; size 6 1/4*

\$25,000 - 30,000

Accompanied by AGL report # CS 57196, dated October 17, 2013, stating the emerald as: Zambian origin, indications of minor, modern clarity enhancement.



56

57

A SAPPHIRE AND DIAMOND RING

centering an oval-shaped sapphire, weighing approximately 11.40 carats, within a round brilliant-cut diamond surround; *estimated total diamond weight: 5.25 carats; mounted in platinum; size 5 3/4*

\$12,000 - 18,000



57

58

A PADPARADSCHA SAPPHIRE AND DIAMOND RING

centering a cushion-shaped modified brilliant step-cut padparadscha sapphire, weighing 4.05 carats, flanked by half-moon-shaped diamonds; *mounted in 18k white gold; size 7 1/4*

\$50,000 - 70,000

Accompanied by GRS report # 2018-019661, dated January 26, 2018, stating the padparadscha sapphire as: Natural, no indications of heat treatment.



58

59

AN EMERALD AND DIAMOND RING

centering a rectangular-shaped emerald-cut emerald, weighing 15.50 carats, flanked by bullet-shaped and baguette-cut diamonds; *estimated total diamond weight: 1.20 carats; mounted in platinum; size 5*

\$60,000 - 80,000

Accompanied by AGL report # 1095465, dated October 11, 2018, stating the emerald as: Colombian origin, indications of insignificant, traditional clarity enhancement.



59



60

60

A PAIR OF DIAMOND AND RUBY PENDANT EARCLIPS

the surmounts of openwork foliate design, set with marquise-shaped and round brilliant-cut diamonds, to articulated pear-shaped and round brilliant-cut diamonds, suspending an oval-sphere of concealed-set rubies; *estimated total diamond weight: 6.95 carats; mounted in platinum; length: 2 13/16in.*

\$25,000 - 35,000

Accompanied by a copy of GIA report # 6127791735, dated November 17, 2010, stating the 0.51 carat diamond as: E color and VS2 clarity.

Accompanied by a copy of GIA report # 5116624372, dated October 29, 2010, stating the 0.50 carat diamond as: D color and VS2 clarity.



61

61

A RUBY AND DIAMOND "TOI ET MOI" RING

centering two pear-shaped mixed-cut rubies, weighing 2.27 and 2.19 carats, accented by round brilliant-cut diamonds; *mounted in platinum; size 6 3/4*

\$18,000 - 25,000

Accompanied by AGL report #1087063 A & B, dated September 25, 2017, stating the rubies as: Burmese (Myanmar) origin, A) with minor heat residue and B) no evidence of heat treatment.



62

62

A RUBY AND DIAMOND PENDANT NECKLACE

centering an oval-shaped mixed-cut ruby, weighing 5.21 carats, within a marquise and round brilliant-cut diamond surround, suspended from a similarly cut ruby, weighing 2.31 carats, set with round brilliant-cut diamonds, to a trio of baguette-cut diamonds; *estimated total diamond weight: 4.15 carats; mounted in platinum; length: 14 3/4in.*

\$25,000 - 30,000

Accompanied by GIA report # 2195631965, dated September 10, 2018, stating the ruby as: a) Burmese, b) inconclusive, both with no indications of heating.



63

63

A DIAMOND BROOCH

of openwork design, set with baguette and round brilliant-cut diamonds; *estimated total diamond weight: 14.00 carats; mounted in platinum; length: 1 15/16in.*

\$7,000 - 10,000



64 Y

A DIAMOND, SAPPHIRE, FIRE OPAL, TURQUOISE AND CORAL BROOCH, VITTORIO B

of whimsical fish motif, the fins set with fire opal, turquoise and round pavé-set round brilliant-cut diamonds, the face set with similarly cut diamonds, to a circular-shaped cabochon purple sapphire body and eye, accented by a coral mouth; *with maker's mark, made in Italy; estimated total diamond weight: 4.35 carats; mounted in 18k bi-colored gold; length: 4in.*

\$10,000 - 15,000



An Impressive Diamond Collection

Inspired by a grandmother's love for gemstones and exquisite jewels, this important collection of diamonds was acquired over several decades and features nine diamonds of exceptional color and clarity. Each diamond is of various size and shape, ranging from D to H color, practically colorless and void of any impurities visible to the untrained eye. While this collection began as a single loose diamond purchase, it has grown into a well curated selection of some of today's most sought-after diamonds, lots 65-71.



65

65

A PAIR OF DIAMOND STUD EARRINGS

centering round brilliant-cut diamonds, weighing 2.14 and 2.01 carats; *mounted in 14k white gold; width: 3/8in.*

\$30,000 - 50,000

Accompanied by GIA report # 1199415168, dated March 4, 2015, stating the 2.14 carats diamond as: F color, VVS2 clarity.

Accompanied by GIA report # 6212531657, dated January 20, 2016, stating the 2.01 carats diamond as: F color, VVS2 clarity.



66

66

A DIAMOND SOLITAIRE RING

centering a pear-shaped brilliant-cut diamond, weighing 5.03 carats; *mounted in 18k white gold; size 6*

\$90,000 - 120,000

Accompanied by GIA report # 2216175328, dated June 11, 2018, stating the diamond as: D color, VS2 clarity.



67



68



69

67

A DIAMOND PENDANT NECKLACE
centering a round brilliant-cut diamond,
weighing 3.01 carats, within a similarly
cut diamond-set frame; *mounted in 14k
white gold; length: 24 1/4in.*

\$25,000 - 35,000

Accompanied by GIA report # 1166075122,
dated April 18, 2014, stating the diamond
as: H color, VS1 clarity.

68

A DIAMOND SOLITAIRE RING
centering an emerald-cut diamond, weighing
4.20 carats; *mounted in 18k bi-colored gold;
size 7 1/4*

\$60,000 - 90,000

Accompanied by GIA report # 2146634585,
dated May 31, 2013, stating the diamond
as: F color, VS1 clarity.

69

A DIAMOND RING, BULGARI
centering a cushion-shaped modified brilliant-
cut diamond, weighing 3.01 carats, accented
by a round brilliant-cut diamond shank; *signed
Bulgari; estimated remaining diamond weight:
1.60 carats; mounted in platinum; size 5 1/4*

\$25,000 - 35,000

Accompanied by GIA report # 15054362,
dated February 21, 2018, stating the diamond
as: G color, VS1 clarity.

70



71



70

A DIAMOND RING

centering a round brilliant-cut diamond, weighing 7.92 carats, flanked by baguette-cut diamonds; *mounted in platinum; size 5 3/4*

\$80,000 - 120,000

Accompanied by GIA report # 2155630658, dated September 20, 2013, stating the diamond as: G color, SI2 clarity.

71

A PAIR OF DIAMOND EARRINGS

centering heart-shaped brilliant-cut diamonds, weighing 4.04 and 4.00 carats; *mounted in 18k white gold; width: 3/8in.*

\$70,000 - 100,000

Accompanied by GIA report # 5146625629, dated February 12, 2013, stating the 4.04 carats diamond as: H color, VS2 clarity.

Accompanied by GIA report # 2181795798, dated June 15, 2018, stating the 4.00 carats diamond as: G color, VS1 clarity.





73

72



72

A DIAMOND RING

centering a round brilliant-cut diamond, weighing 1.61 carats, flanked by baguette-cut diamonds; *mounted in platinum; size 5 1/2*

\$15,000 - 20,000

Accompanied by GIA report # 5172075688, dated March 23, 2015, stating the diamond as: D color, Internally Flawless clarity.

74



74

A DIAMOND RING

centering a round brilliant-cut diamond, weighing 3.01 carats, within a similarly cut diamond surround; *mounted in 14k bi-colored gold; size 6*

\$30,000 - 50,000

Accompanied by GIA report # 5156518869, dated July 25, 2013, stating the diamond as: E color, VS2 clarity.

73

A SAPPHIRE AND DIAMOND NECKLACE

centering a cushion-shaped pyramidal-cut cabochon sapphire, weighing 12.32 carats, to a pavé-set round brilliant-cut diamond linked chain; *estimated total diamond weight: 6.00 carats; mounted in platinum; length: 15 3/4in.*

\$10,000 - 15,000

Accompanied by AGL report # CS 63011, dated June 18, 2015, stating the sapphire as: Ceylon (Sri Lanka) origin, no indications of heat or clarity enhancement.

75

A DIAMOND RING

centering an emerald-cut diamond, weighing 3.70 carats, flanked by baguette-cut diamonds; *mounted in platinum; size 4 3/4*

\$8,000 - 12,000

Accompanied by GIA report # 5192637389, dated August 29, 2018, stating the diamond as: L color, VS2 clarity.



75

76

A PAIR OF DIAMOND PENDANT EARRINGS

the surmounts set with round brilliant-cut diamonds, weighing 1.08 and 1.07 carats, within a similarly cut diamond surround, to bullet-shaped diamond accents, suspending pear-shaped brilliant-cut diamonds, each weighing 1.01 carats, framed by round brilliant-cut diamonds; *estimated remaining diamond weight: 3.00 carats; mounted in platinum; length: 1 5/8in.*

\$10,000 - 15,000

Accompanied by GIA report # 1179447998, dated June 4, 2014, stating the 1.08 carats diamond as: G color, SI1 clarity.

Accompanied by GIA report # 2151887797, dated January 27, 2014, stating the 1.07 carats diamond as: G color, SI1 clarity.

Accompanied by GIA report # 2166699602, dated January 17, 2014, stating the 1.01 carats diamond as: G color, SI1 clarity.

Accompanied by GIA report # 6157778287, dated December 18, 2013, stating the 1.01 carats diamond as: G color, SI1 clarity.



76

77

A SAPPHIRE AND DIAMOND RING

centering a cushion-shaped mixed-cut sapphire, weighing 8.82 carats, framed by a double row of round brilliant-cut diamonds; *estimated total diamond weight: 4.20 carats; mounted in platinum; size 6 1/4*

\$40,000 - 60,000

Accompanied by AGL report # CS 50190, dated June 27, 2012, stating the sapphire as: Ceylon (Sri Lanka) origin, no indications of heat or clarity enhancement.

Accompanied by GIA report # 1146622590, dated July 10, 2012, stating the sapphire as: Burmese (Myanmar) origin, no indications of heating.



77



78



80



79



81

PROPERTY FROM THE ESTATE OF A COLORADO ARTIST

78

AN EMERALD AND DIAMOND RING

centering an oval-shaped cabochon emerald, weighing approximately 45.55 carats, with a round brilliant-cut diamond surround; *estimated total diamond weight: 1.65 carats; mounted in platinum and 18k gold; size 6*

\$28,000 - 35,000

Accompanied by AGL report # 1093318, dated June 26, 2018, stating the emerald as: Colombian origin, indications of minor, modern clarity enhancement.

80

A SAPPHIRE AND DIAMOND RING

centering an oval-shaped sapphire, weighing 7.46 carats, accented by tapered baguette and baguette-cut diamonds; *estimated total diamond weight: 2.90 carats; mounted in 18k white gold; size 5 3/4*

\$8,000 - 12,000

81

A DIAMOND RING

centering a pear-shaped brilliant-cut diamond, weighing 4.18 carats, flanked by tapered baguette-cut diamonds; *mounted in platinum; size 5 1/2*

\$13,000 - 16,000

Accompanied by GIA report # 5192727265, dated October 10, 2018, stating the diamond as: L color, SI2 clarity.

PROPERTY OF VARIOUS COLLECTORS

79

A RUBY AND DIAMOND RING

centering a cushion-shaped brilliant-cut ruby, weighing 2.67 carats, within a tapered baguette and square-shaped diamond setting; *estimated total diamond weight: 2.25 carats; mounted in platinum; size 6*

\$20,000 - 30,000

Please contact the jewelry department for AGL report.

Accompanied by GIA report # 2151720853, dated October 29, 2013, stating the ruby as: Burmese (Myanmar) origin, no indications of heating.



83



82



84

82

A COLORED SAPPHIRE AND DIAMOND RING

centering an oval-shaped modified brilliant step-cut pink sapphire, weighing 3.07 carats; flanked by trillion-cut diamonds; *mounted in platinum; size 5 1/2*

\$6,000 - 9,000

Accompanied by GRS report # 2011062424, dated June 13, 2011, stating the pink sapphire as: Madagascan origin, no indications of thermal treatment.

83

A DIAMOND SOLITAIRE RING

centering a heart-shaped brilliant-cut diamond, weighing 3.50 carats; *mounted in 14k white gold; size 6 1/2*

\$25,000 - 35,000

Accompanied by GIA report # 2146750840, dated March 12, 2013, stating the diamond as: F color, VS2 clarity.

84

AN EMERALD AND DIAMOND RING

centering a rectangular-shaped emerald-cut emerald, weighing 14.49 carats, within an ornate rose and round brilliant-cut diamond setting; *estimated total diamond weight: 3.20 carats; mounted in platinum; size 6 3/4*

\$50,000 - 70,000

Accompanied by AGL report # 1082085, dated May 3, 2017, stating the emerald as: Colombian origin, no indications of heat or clarity enhancement.



85

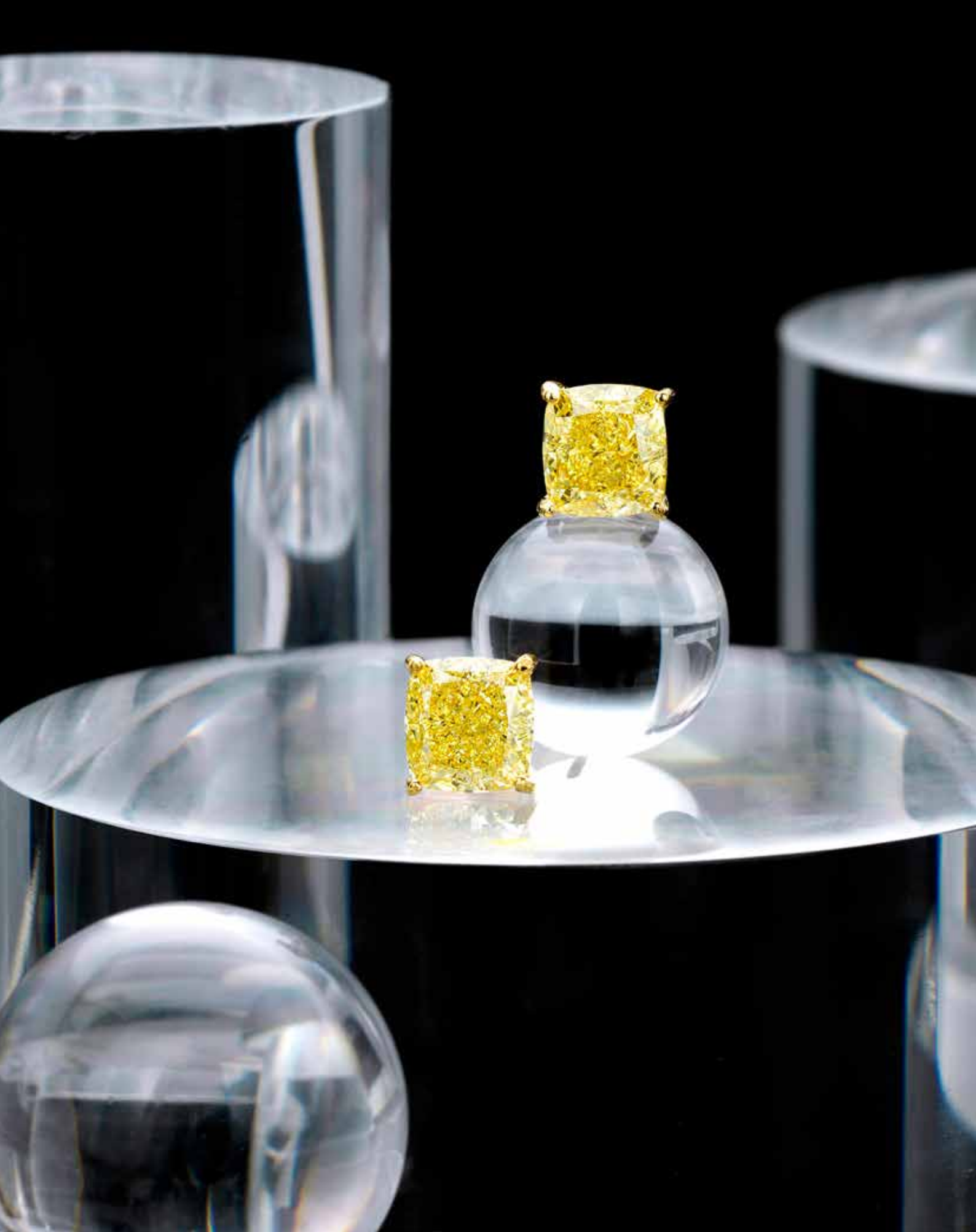
A PAIR OF FANCY COLORED DIAMOND EARRINGS

set with cushion-shaped modified brilliant-cut Fancy Vivid Yellow diamonds, each weighing 3.00 carats; *mounted in 18k gold; width: 5/16in.*

\$110,000 - 150,000

Accompanied by GIA report # 5192149478, dated March 9, 2018, stating the 3.00 carats diamond as: Fancy Vivid Yellow color, SI1 clarity.

Accompanied by GIA report # 2185931090, dated December 20, 2017, stating the 3.00 carats diamond as: Fancy Vivid Yellow, SI2 clarity.





86



87



88

86

AN EMERALD AND DIAMOND RING

centering an oval-shaped cabochon emerald, weighing approximately 9.20 carats, within an ornate openwork round brilliant-cut diamond setting; *estimated total diamond weight: 3.05 carats; mounted in 18k white gold; size 5*

\$5,000 - 7,000

87

A PAIR OF DIAMOND EARRINGS

of openwork design, set with three circular rows of round brilliant-cut diamonds; *estimated total diamond weight: 10.35 carats; mounted in 18k white gold; width: 1 3/8in.*

\$18,000 - 25,000

88

A SAPPHIRE AND DIAMOND RING

centering an oval-shaped cabochon sapphire, weighing 13.02 carats, within a round brilliant-cut diamond surround, flanked by tapered baguette-cut diamonds; *estimated total diamond weight: 1.25 carats; mounted in platinum; size 5 3/4*

\$8,000 - 12,000

Accompanied by AGL report # 1096935, dated November 1, 2018, stating the sapphire as: Ceylon (Sri Lankan) origin, no indications of heat or clarity enhancement.



90

89



89

A DIAMOND SOLITAIRE RING

centering a round brilliant-cut diamond, weighing 3.40 carats; mounted in platinum; size 5 3/4

\$20,000 - 30,000

Accompanied by GIA report # 5156565103, dated July 26, 2013, stating the diamond as: H color, VS1 clarity.

90

A DIAMOND NECKLACE

of bombé form, pavé-set throughout with round brilliant-cut diamonds; estimated total diamond weight: 40.40 carats; mounted in platinum; circumference: 14 1/4in.

\$25,000 - 35,000

91



91

AN EMERALD AND DIAMOND RING

centering a rectangular-shaped emerald-cut emerald, weighing 4.12 carats, within a round brilliant-cut diamond frame, accented by similarly cut diamonds; estimated total diamond weight: 4.55 carats; mounted in 18k white gold; size 6

\$65,000 - 95,000

Accompanied by AGL report # CS 1079255, dated November 16, 2016, stating the emerald as: Colombian origin, indications of minor, oil-type, clarity enhancement.

Accompanied by Gübelin report # 15067041, dated June 22, 2015, stating the emerald as: Colombian origin, indications of minor clarity enhancement.

Accompanied by eight GIA reports. Please contact the jewelry department for details.



92



94



93

92

A DIAMOND BROOCH

of cascading foliate design, set throughout with marquise, pear and round brilliant-cut diamonds; *estimated total diamond weight: 15.00 carats; mounted in 14k white gold; length: 2 5/16in.*

\$10,000 - 15,000

93

A PAIR OF DIAMOND PENDANT EARRINGS

centrally set with round brilliant-cut diamonds, weighing 2.23 and 2.20 carats, to a similar diamond-set surround and surmount; *estimated remaining diamond weight: 1.25 carats; mounted in 14k white gold; length: 1in.*

\$23,000 - 28,000

Accompanied by GIA report # 2176124931, dated March 27, 2014, stating the 2.23 carats diamond as: H color, VVS2 clarity.

Accompanied by GIA report # 2176390200, dated May 19, 2014, stating the 2.20 carats diamond as: H color, VVS2 clarity.

94

A EMERALD AND DIAMOND RING

centering a rectangular-shaped emerald-cut emerald, weighing approximately 16.10 carats, within a round brilliant-cut diamond surround, to a similarly cut diamond shank; *estimated total diamond weight: 6.90 carats; mounted in platinum; size 5 3/4*

\$60,000 - 80,000

Accompanied by AGL report # CS 1079404, dated October 21, 2016, stating the emerald as: Colombian origin, indications of minor, traditional enhancement.



95



96



97

95

A FANCY COLORED DIAMOND AND DIAMOND RING

centering a pear-shaped modified brilliant-cut Fancy Vivid Yellow diamond, weighing 3.02 carats, flanked by pear-shaped diamonds; mounted in platinum and 18k gold; 6

\$40,000 - 60,000

Accompanied by GIA report # 2155924498, dated February 10, 2014, stating the diamond as: Fancy Vivid Yellow color, SI2 clarity.

96

A DIAMOND NECKLACE

of overlapping stylized design, set with graduated baguette-cut diamonds, centering a pear-shaped brilliant-cut diamond, weighing 2.31 carats, accented by marquise and round brilliant-cut diamonds; estimated remaining diamond weight: 29.50 carats; mounted in platinum; length: 15in.

\$25,000 - 45,000

Accompanied by GIA report # 6193763034, dated October 18, 2018, stating the diamond as: F color, SI1 clarity.

97

A NATURAL PEARL AND DIAMOND RING

centering a natural pearl, measuring 10.08 x 9.97mm, within a round brilliant-cut diamond surround; estimated total diamond weight: 4.10 carats; mounted in platinum; size 5

\$10,000 - 15,000

Accompanied by GIA report # 1186119303, dated October 29, 2018, stating the pearl as: Natural Saltwater, no indications of treatment.





98

A DIAMOND SOLITAIRE RING, ROYAL DE VERSAILLES

centering a round brilliant-cut diamond, weighing 7.01 carats; *signed RdV; accompanied by a signed box; mounted in platinum; size 5 3/4*

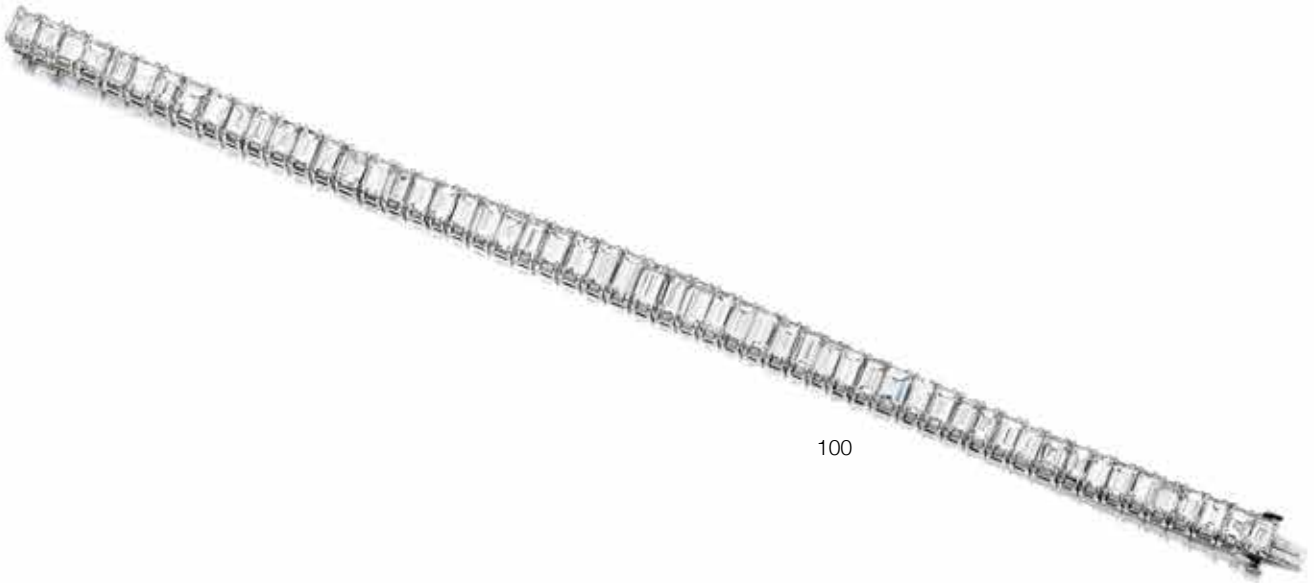
\$180,000 - 250,000

Accompanied by GIA report # 13338344, dated February 20, 2007, stating the diamond as: F color, VS1 clarity.

99



100



99

A SAPPHIRE AND DIAMOND “TOI ET MOI” RING

of crossover design, set with a round brilliant-cut sapphire, weighing approximately 5.50 carats, framed by round brilliant-cut diamonds, and an old European-cut diamond, weighing approximately 4.00 carats, within a calibr -cut sapphire frame, accented by a baguette-cut diamond shank; *estimated total diamond weight: 2.55 carats; mounted in platinum; size 5 1/2*

\$30,000 - 40,000

100

A DIAMOND LINE BRACELET

designed as an articulated graduated line of rectangular-shaped diamonds; *estimated total diamond weight: 19.50 carats; mounted in platinum; length: 7in.*

\$14,000 - 18,000



101

101

A DIAMOND NECKLACE

designed as a graduated line of rectangular-cut diamonds; *estimated total diamond weight: 18.50 carats; mounted in platinum; length: 15in.*

\$18,000 - 25,000



102

102

A DIAMOND RING

centering a pear-shaped diamond, weighing 12.18 carats, flanked by tapered baguette-cut diamonds; *mounted in platinum; size 7 1/2*

\$80,000 - 120,000



103

103

A SAPPHIRE AND DIAMOND RING

centering a cushion-shaped brilliant step-cut sapphire, weighing 4.88 carats, flanked by two oval-shaped modified brilliant-cut diamonds, each weighing 1.01 carats; *mounted in platinum; size 5 3/4*

\$20,000 - 30,000

Accompanied by GRS report # 2016-021704, dated February 26, 2016, stating the sapphire as: Burmese (Myanmar) origin, no indications of heat.

Accompanied by GIA report # 10939965, dated September 22, 2016, stating the 1.01 carats diamond as: E color, VVS2 clarity.

Accompanied by GIA report # 6177881998, dated September 23, 2016, stating the 1.01 carats diamond as: D color, VVS2 clarity.



104

104

A DIAMOND SOLITAIRE RING

centering a round brilliant-cut diamond, weighing 3.05 carats; *mounted in platinum; size 5 3/4*

\$40,000 - 60,000

Accompanied by GIA report # 6167915753, dated January 13, 2015, stating the diamond as: G color, VVS1 clarity.



105

105

AN EMERALD AND DIAMOND RING, TIFFANY & CO.

centering a pear-shaped emerald, weighing approximately 0.80 carat, within a ballerina setting framed by tapered baguette-cut diamonds, to a round brilliant-cut diamond split shank; *signed Tiffany & Co.; estimated total diamond weight: 3.05 carats; mounted in platinum; size 6 1/2*

\$5,000 - 7,000



106

106

A RUBY AND DIAMOND RING

centering a cushion-shaped ruby, weighing 4.40 carats; within a round brilliant-cut diamond-set frame; *estimated total diamond weight: 1.80 carats; mounted in 18k white gold; size 6 1/2*

\$8,000 - 12,000

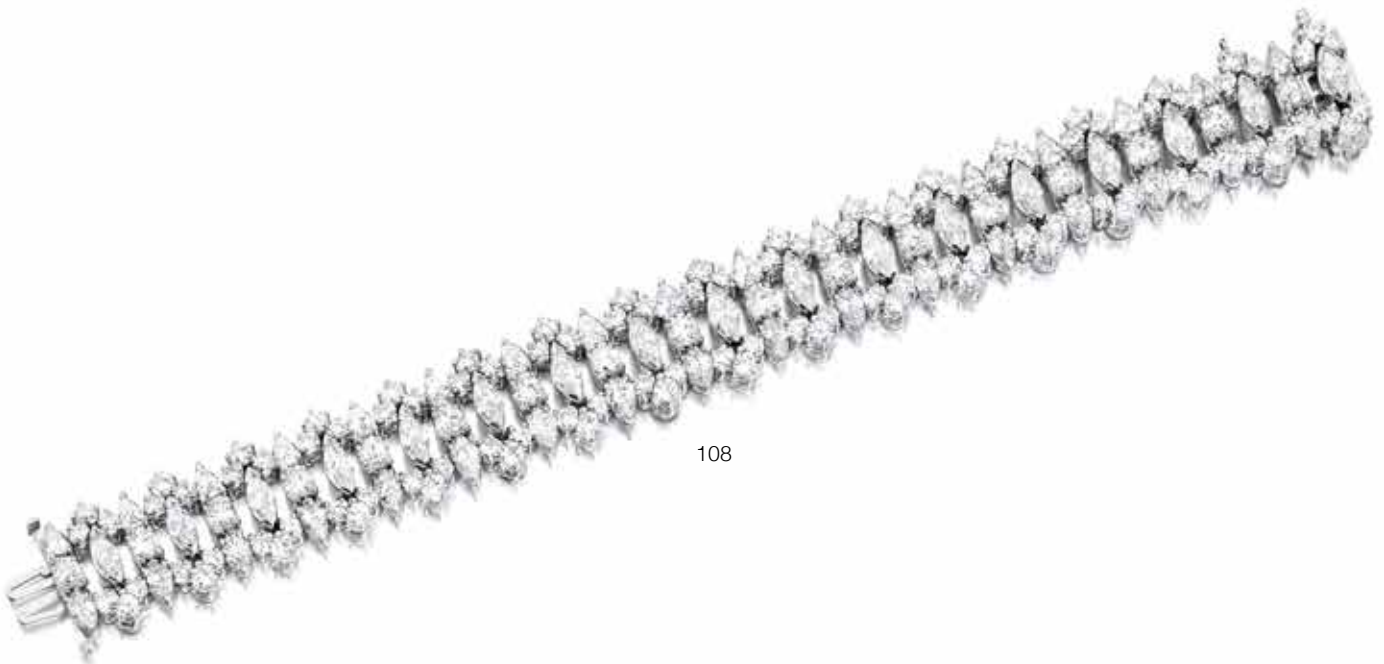
Accompanied by AGL report # 8087581, dated March 13, 2018, stating the ruby as: Burmese (Myanmar) origin, indications of heat and minor clarity enhancement.



107



109



108

107

A NATURAL PEARL AND DIAMOND “TOI ET MOI” RING

of crossover design, set with button-shaped natural pearls, measuring approximately 12.89 and 12.50mm, accented by baguette round brilliant-cut diamonds; *mounted in platinum; size 3 1/4*

\$12,000 - 18,000

Accompanied by GIA report # 5181938451, dated December 29, 2017, stating the pearls as: Natural, Saltwater, a) Worked b) No indications of treatment.

108

A DIAMOND BRACELET

of openwork design, centrally set with alternating marquise and round brilliant-cut diamonds, accented by a pear and round brilliant-cut diamond-set frame; *estimated total diamond weight: 30.50 carats; mounted in platinum; length: 7 1/4in.*

\$25,000 - 35,000

109

A PAIR OF DIAMOND STUDS

centering old European-cut diamonds, weighing 1.97 and 1.96 carats; *mounted in 18k white gold; width: 5/16in.*

\$10,000 - 15,000



110

A DIAMOND SOLITAIRE RING

centering a pear-shaped brilliant-cut diamond, weighing 5.03 carats; *mounted in 18k white gold; size 6 1/4*

\$200,000 - 300,000

Accompanied by GIA report # 2121562401, dated December 3, 2015, stating the diamond as: D color, Internally Flawless clarity.

Accompanied by GIA letter, dated December 2, 2015, stating the diamond as: Type IIa.





111



113



112

PROPERTY OF A NEW YORK GENTLEMAN

111
A DIAMOND BROOCH, CIRCA 1910
of openwork shield design, set throughout with old European-cut diamonds, the largest weighing approximately 1.30 carats; *estimated remaining diamond weight: 3.00 carats; mounted in platinum; length: 2 1/8in.*

\$8,000 - 12,000

PROPERTY OF VARIOUS COLLECTORS

112
A PAIR OF RUBY AND DIAMOND PENDANT EARRINGS
centering oval-shaped and cushion-shaped rubies, weighing a total of approximately 3.40 carats, within a round brilliant-cut diamond-set surround, accented by marquise-shaped diamonds, suspended from round brilliant-cut diamonds; *estimated total diamond weight: 8.95 carats; mounted in 14k bi-colored gold; length: 1 1/2in.*

\$10,000 - 15,000

Accompanied by GCS report # 78158-51, dated May 22, 2018, stating the rubies as: Thai (Siam) origin, no indications of heat.

113
A RUBY AND DIAMOND RING
centering an oval-shaped ruby, weighing approximately 3.50 carats, flanked by trillion-shaped and baguette-cut diamonds; *estimated total diamond weight: 1.25 carats; mounted in 18k white gold; size 5 3/4*

\$12,000 - 18,000

Accompanied by GCS report # 78155-03, dated May 22, 2018, stating the ruby as: Burmese (Myanmar) origin, no indications of heat or clarity enhancement.



114

115

114

A RUBY AND DIAMOND NECKLACE

centrally set with sixteen cushion and oval-shaped rubies, framed by round brilliant-cut diamonds, to a line of similarly cut diamonds, accented throughout with marquise-shaped diamonds, set with an oval-shaped ruby and round brilliant-cut diamond clasp; *estimated total diamond weight: 24.00 carats; mounted in platinum; length: 16 1/4in.*

\$30,000 - 50,000

Accompanied by GCS report # 78158-52, dated May 22, 2018, stating the rubies as: Burmese (Myanmar) origin, no indications of heat.

115

A DIAMOND RING

of scroll design, centering a round brilliant-cut diamond, weighing 3.20 carats, accented by similarly cut diamonds; *estimated remaining diamond weight: 3.75 carats; mounted in 18k white gold; size 6*

\$25,000 - 35,000

Accompanied by GIA report # 5192141967, dated February 28, 2018, stating the diamond as: I color, VVS2 clarity.



116



117



Original drawing from Oscar Heyman

PROPERTY FORMERLY FROM A NEW YORK SOCIALITE

116

A DIAMOND RIVIÈRE NECKLACE

of graduated design, set with sixty-two round brilliant-cut diamonds, the largest weighing 1.88 carats; *estimated total diamond weight: 44.00 carats; mounted in platinum; length: 14 3/4in.*

\$25,000 - 35,000

PROPERTY OF VARIOUS COLLECTORS

117

A SAPPHIRE AND DIAMOND RING, OSCAR HEYMAN

centering an oval-shaped modified mixed-cut sapphire, weighing 17.03 carats, flanked by clusters of pear and oval-shaped diamonds; *unsigned, no.67110; estimated total diamond weight: 1.50 carats; mounted in platinum; size 6*

\$60,000 - 80,000

Accompanied by AGL report # CS 50189, dated June 27, 2012, stating the sapphire as: Ceylon (Sri Lanka) origin, no indications of heat or clarity enhancement.







118

118

A PAIR OF DIAMOND STUD EARRINGS

set with round brilliant-cut diamonds, weighing 5.02 and 5.01 carats; mounted in 18k gold; width: 1/2in.

\$325,000 - 425,000

Accompanied by GIA report # 2191727509, dated October 3, 2018, stating the 5.02 carats diamond as: E color, VVS2 clarity.

Accompanied by GIA report # 5141564678, dated March 8, 2017, stating the 5.01 carats diamond as: E color, VVS1 clarity.



119

119

A FANCY COLORED DIAMOND AND DIAMOND RING

centering a cushion-shaped modified brilliant-cut Fancy Light Yellow diamond, weighing 18.76 carats, flanked by trillion-shaped diamonds, weighing 1.59 and 1.46 carats; mounted in platinum; size 6 1/4

\$100,000 - 150,000

Accompanied by GIA report # 2193417745, dated August 1, 2018, stating the diamond as: Fancy Light Yellow color, VVS2 clarity.



120

A SAPPHIRE AND DIAMOND RING

centering a rectangular-shaped emerald-cut sapphire, weighing 33.03 carats, flanked by baguette-cut diamonds; *estimated total diamond weight: 1.25 carats; mounted in in platinum; size 6 1/4*

\$250,000 - 350,000

Accompanied by AGL report # CS 59825, dated March 21, 2014, stating the sapphire as: Ceylon (Sri Lanka) origin, no indications of heat or clarity enhancement.

Accompanied by Gubelin report # 17062015, dated July 11, 2017, stating the sapphire as: Ceylon (Sri Lanka) origin, no indications of heat or clarity enhancement.

Accompanied by GIA report # 1188037914, dated September 1, 2014, stating the sapphire as: Sri Lankan, no indications of heat.

The deep intense blue and high luster of a Sri Lankan sapphire is widely admired and appreciated around the world. Perhaps the most famous of all is the one worn by Kate Middleton. This lot is an extraordinary example of a large unheated Sri Lankan sapphire which displays an evenly distributed blue, similar to that of a Kashmir.





121

AN IMPORTANT DIAMOND RING

centering an emerald-cut diamond, weighing 18.04 carats, flanked by trillion-cut diamonds; *estimated remaining diamond weight: 1.50 carats; mounted in platinum; size 3 3/4*

\$400,000 - 600,000

Accompanied by GIA report # 6193729615, dated October 5, 2018, stating the diamond as: G color, VS2 clarity.

END OF SALE



Bonhams

AUCTIONEERS SINCE 1793



The Art of Time

New York | December 6, 2018

INQUIRIES

+1 (212) 461 6530
jonathan.snellenburg@bonhams.com
bonhams.com/CLK

**CARTIER. A VERY FINE PLATINUM
AND SAPPHIRE MINUTE
REPEATING POCKET WATCH
ACTIVATED VIA THE BEZEL**
\$25,000 - 30,000

Bonhams

AUCTIONEERS SINCE 1793



Fine Jewellery

New Bond Street, London | 5 December 2018

ENQUIRIES

+44 (0) 20 7468 8284
emily.barber@bonhams.com
[bonhams.com/jewellery](https://www.bonhams.com/jewellery)

AN IMPORTANT DIAMOND RING

The step-cut diamond weighing 24.31 carats,
D colour, Internally Flawless clarity

£1,300,000 - 1,800,000

US\$1,700,000 - 2,300,000 *

Bonhams

AUCTIONEERS SINCE 1793



Hong Kong Watches 1.0

Hong Kong | 24 November 2018

VIEWING

21 - 24 November 2018

INQUIRIES

+852 2918 4321

tim.bourne@bonhams.com

sharon.chan@bonhams.com

Bonhams.com/watches

RICHARD MILLE

RM003 RG - EVOLUTION II

A unique pink gold, orange sapphire and black diamond-set two time zone tourbillon wristwatch

Estimate Upon Request *

Bonhams

AUCTIONEERS SINCE 1793



Modern Decorative Art + Design

New York | December 14, 2018

ENQUIRIES

+1 212 710 1306

benjamin.walker@bonhams.com

+1 917 206 1611

dan.tolson@bonhams.com

bonhams.com/design

TIFFANY STUDIOS

"TULIP" TABLE LAMP

circa 1910

with a reticulated "Queen Anne's
Lace" base

\$150,000 - 250,000 *

DIAMOND INDEX

Lot No.	Carat	Cut	Color	Clarity	Certificate	Estimate
2	4.03	Emerald	K	VS2	GIA 2175625991	\$15,000 - \$20,000
5	5.03	Cushion	Fancy Dark Brown Greenish Yellow	VS2	GIA 2186392299	\$10,000 - \$15,000
16	2.20	Round Brilliant	H	VS1	GIA 2166850565	\$12,000 - \$18,000
24	2.01	Round Brilliant	D	SI1	GIA 5176128231	\$12,000 - \$18,000
26	3.38 - 0.40	Fancy Shaped and Round Brilliant	Fancy Colored and Colorless	See Department	See Department	\$25,000 - \$35,000
27	5.00	Round Brilliant	Fancy Brownish Yellow	VVS2	GIA 2155319280	\$10,000 - \$15,000
35	10.02	Pear	Fancy Dark Yellowish Brown	I1	GIA 2175282848	\$15,000 - \$25,000
36	2.10*	Round Brilliant	H-I	VS		\$50,000 - \$70,000
39	2.37	Rectangle	Fancy Light Yellow		GIA 2175199534	\$3,500 - \$5,500
41	7.56	Old - Euro	M+	SI-I		\$18,000 - \$25,000
44	2.56, 2.50	Old Mine	M+	VS-SI		\$15,000 - \$20,000
47	3.61	Old Mine	L+	SI		\$8,000 - \$12,000
49	1.50*	Old - Euro	I - K+	SI - I		\$8,000 - \$12,000
65	2.14, 2.01	Round Brilliant	F, F	VVS2, VVS2	"GIA 1199415168, GIA 6212531657"	\$30,000 - \$50,000
66	5.03	Pear	D	VS2	GIA 2216175328	\$90,000 - \$120,000
67	3.01	Round Brilliant	H	VS1	GIA 1166075122	\$25,000 - \$35,000
68	4.20	Emerald	F	VS1	GIA 2146634585	\$60,000 - \$90,000
69	3.01	Cushion	G	VS1	GIA 15054362	\$25,000 - \$35,000
70	7.92	Round Brilliant	G	SI2	GIA 2155630658	\$80,000 - \$120,000
71	4.04, 4.00	Heart	H, G	VS2, VS1	"GIA 5146625629, GIA 2181795798"	\$70,000 - \$100,000
72	1.61	Round Brilliant	D	IF	GIA 5172075688	\$15,000 - \$20,000
74	3.01	Round Brilliant	E	VS2	GIA 5156518869	\$30,000 - \$50,000
75	3.70	Emerald	L	VS2	GIA 5192637389	\$8,000 - \$12,000
	1.08, 1.07	Round Brilliant	G, G	SI1, SI1	"GIA 1179447998, GIA 2151887797"	
76	1.01, 1.01	Pear	G, G	SI1, SI1	"GIA 2166699602, GIA 6157778287"	\$10,000 - \$15,000
81	4.18	Pear	L	SI2	GIA 5192727265	\$13,000 - \$16,000
83	3.50	Heart	F	VS2	GIA 2146750840	\$25,000 - \$35,000
85	3.00, 3.00	Cushion	Fancy Vivid Yellow	SI1, SI2	"GIA 5192149478, GIA 2185931090"	\$110,000 - \$150,000
89	3.40	Round Brilliant	H	VS1	GIA 5156565103	\$20,000 - \$30,000
93	2.23, 2.20	Round Brilliant	H, H	VVS2, VVS2	"GIA 2176124931, GIA 2176390200"	\$23,000 - \$28,000
95	3.02	Pear	Fancy Vivid Yellow	SI2	GIA 2155924498	\$40,000 - \$60,000
96	2.31	Pear	F	SI1	GIA 6193763034	\$25,000 - \$45,000
98	7.01	Round Brilliant	F	VS1	"GIA 13338344, Weinstein T2306"	\$180,000 - \$250,000
99	4.00	Old - Euro	K+	VS-SI		\$30,000 - \$40,000
102	12.18	Pear	M+	SI		\$80,000 - \$120,000
103	1.01, 1.01	Oval	E, D	VVS2, VVS2	"GIA 10939965, GIA 6177881998"	\$20,000 - \$30,000
104	3.05	Round Brilliant	G	VVS1	"GIA 6167915753, GCAL 252150061"	\$40,000 - \$60,000
109	1.97, 1.96	Old - Euro	M+	SI		\$10,000 - \$15,000
110	5.03	Pear	D	IF	GIA 2121562401	\$200,000 - \$300,000
111	1.30*	Old - Euro	H-J	SI-I		\$8,000 - \$12,000
115	3.20	Round Brilliant	I	VVS2	GIA 5192141967	\$25,000 - \$35,000
	1.56	Round Brilliant	J-K	VS2		
	1.62	Round Brilliant	I-J	VS2		
116	1.81	Round Brilliant	I-J	VS1		\$25,000 - \$35,000
	1.84	Round Brilliant	J-K	VS2		
	1.88	Round Brilliant	J-K	VS2		
118	5.02, 5.01	Round Brilliant	E, E	VVS2, VVS1	"GIA 2191727509, GIA 5141564678"	\$325,000 - \$425,000
	18.76	Cushion	Fancy Light Yellow	VVS2	GIA 2193417745	
119	1.59	Trillion	H-I	SI		\$100,000 - \$150,000
	1.46	Trillion	H-I	SI		
121	18.04	Emerald	G	VS2	GIA 6193729615	\$400,000 - \$600,000

*next to color - not tested for origin of color

* next to piece - other significant stones within the piece

* next to weight - approximate weight

* next to cert - lab graded color only

* next to lot number - Bonhams specialists disagree with the grade. Please see a specialist for details.

This list is provided for your convenience based on the opinion of our gemologists.

It in no way represents a guarantee or warranty.

Bonhams is not responsible for any discrepancies between this information & other opinions.

CERTIFIED RUBY INDEX

Lot No.	Carat/Dimensions	Cut/Shape	Origin	Treatment	Laboratory Report
19	3.07	Oval	Burmese	None	Gubelin, GRS
43	Largest = 6.00 x 4.85 x 2.70	Oval	Burmese	None	GIA
45	4.97	Cushion	Burmese	None	AGL, Gubelin
61	2.27, 2.19	Pear	Burmese	"Residue, no evidence of heat"	AGL
62	5.21	Oval	Burmese	None	GIA
79	2.67	Cushion	Burmese	None	GIA
106	4.41	Cushion	Burmese	"Heat and minor clarity"	AGL
112	3.40	Oval and Cushion	Thai	None	GCS
113	3.16	Oval	Burmese	None	GCS
114	28.00 total approx	Cushion and Oval	Burmese	None	GCS

CERTIFIED SAPPHIRE INDEX

Lot No.	Carat/Dimensions	Cut/Shape	Origin	Treatment	Laboratory Report
13	24.30	Rectangle	Ceylon	None	AGL
17	5.25	Square Cushion	Ceylon	None	AGL
32	14.85	Star Double Cabochon	Burmese	None	AGL
46	3.00	Square Cushion	Kashmir	None	AGL
49	"8.2 x 6.2 x 4.27mm & 7.4 x 5.6 x 5.62mm"	Oval Cambodian	None	AGL	
54	11.65	Rectangle Cushion	Burmese	None	GRS
58	4.05	Cushion	Padparadscha (Natural)	None	GRS
73	12.32	Pyramidal Cabochon	Ceylon	None	AGL
77	8.82	Cushion	Ceylon or Burmese	None	AGL, GIA
82	3.07	Oval Madagascar	None	GRS	
88	13.02	Oval Ceylon	None	AGL	
103	4.88	Cushion	Burmese	None	GRS
117	17.03	Oval Ceylon	None	AGL	
120	33.03	Rectangle	Ceylon	None	AGL, Gubelin

CERTIFIED EMERALD INDEX

Lot No.	Carat/Dimensions	Cut/Shape	Origin	Treatment	Laboratory Report
37	5.17	Oval		Indications of clarity enhancement	GIA
56	8.32	Square	Zambia	Minor	AGL
59	15.50	Rectangle	Columbia	Insignificant	AGL
78	45.55	Oval Cabochon	Columbia	Minor	AGL
84	14.49	Rectangle	Columbia	None	AGL
91	4.12	Rectangle	Columbia	Minor	AGL, Gubelin
94	16.10	Rectangle	Columbia	Minor	AGL

CERTIFIED PEARL INDEX

Lot No.	Carat/Dimensions	Cut/Shape	Origin	Treatment	Laboratory Report
97	Round	10.08 x 9.97 mm	Natural Saltwater	None	GIA
107	Button	12.89 and 12.50 mm	Natural Saltwater	None	GIA

CONDITIONS OF SALE

The following Conditions of Sale, as amended by any published or posted notices or verbal announcements during the sale, constitute the entire terms and conditions on which property listed in the catalog shall be offered for sale or sold by Bonhams & Butterfields Auctioneers Corp. and any consignor of such property for whom we act as agent. If live online bidding is available for the subject auction, additional terms and conditions of sale relating to online bidding will apply; see www.bonhams.com/WebTerms for the supplemental terms. As used herein, "Bonhams," "we" and "us" refer to Bonhams & Butterfields Auctioneers Corp.

1. As used herein, the term "bid price" means the price at which a lot is successfully knocked down to the purchaser. The term "purchase price" means the aggregate of (a) the bid price, (b) a PREMIUM retained by us and payable by the purchaser EQUAL TO 25% OF THE FIRST \$250,000 OF THE BID PRICE, 20% OF THE AMOUNT OF THE BID PRICE ABOVE \$250,001 UP TO AND INCLUDING \$4,000,000, AND 12.5% OF THE AMOUNT OF THE BID PRICE OVER \$4,000,000, and (c) unless the purchaser is exempt by law from the payment thereof, any Arizona, California, Colorado, Connecticut, Florida, Georgia, Illinois, Massachusetts, Nevada, New Jersey, New York, Pennsylvania, Texas, Virginia, Washington, D.C., Washington state, or other state or local sales tax (or compensating use tax) and other applicable taxes. With regard to New York sales tax, please refer to the "Sales and Use Tax" section of these Conditions of Sale.

2. On the fall of the auctioneer's hammer, the highest bidder shall have purchased the offered lot in accordance and subject to compliance with all of the conditions set forth herein and (a) assumes full risk and responsibility therefor, (b) if requested will sign a confirmation of purchase, and (c) will pay the purchase price in full or such part as we may require for all lots purchased. No lot may be transferred. Any person placing a bid as agent on behalf of another (whether or not such person has disclosed that fact or the identity of the principal) may be jointly and severally liable with the principal under any contract resulting from the acceptance of a bid.

Unless otherwise agreed, payment in good funds is due and payable within five (5) business days following the auction sale. Whenever the purchaser pays only a part of the total purchase price for one or more lots purchased, we may apply such payments, in our sole discretion, to the lot or lots we choose. Payment will not be deemed made in full until we have collected good funds for all amounts due.

Payment for purchases may be made in or by (a) cash, (b) cashier's check or money order, (c) personal check with approved credit drawn on a U.S. bank, (d) wire transfer or other immediate bank transfer, or (e) Visa, MasterCard, American Express or Discover credit, charge or debit card. A processing fee will be assessed on any returned checks. Please note that the amount of cash notes and cash equivalents that can be accepted from a given purchaser may be limited.

To the fullest extent permitted by applicable law: The purchaser grants us a security interest in the property, and we may retain as collateral security for the purchaser's obligations to us, any property and all monies held or received by us for the account of the purchaser, in our possession. We also retain all rights of a secured party under the California Commercial Code. If the foregoing conditions or any other applicable conditions herein are not complied with, in addition to all other remedies available to us and the consignor by law, we may at our election: (a) hold the purchaser liable for the full purchase price and any late charges, collection costs, attorneys' fees and costs, expenses and incidental damages incurred by us or the consignor arising out of the purchaser's breach; (b) cancel the sale, retaining as liquidated damages all payments made by the purchaser; and/or (c) cancel the sale and/or resell the purchased property, at public auction and/or by private

sale, and in such event the purchaser shall be liable for the payment of all consequential damages, including any deficiencies or monetary losses, and all costs and expenses of such sale or sales, our commissions at our standard rates, all other charges due hereunder, all late charges, collection costs, attorneys' fees and costs, expenses and incidental damages. In addition, where two or more amounts are owed in respect of different transactions by the purchaser to us, to Bonhams 1793 Limited and/or to any of our other affiliates, subsidiaries or parent companies worldwide within the Bonhams Group, we reserve the right to apply any monies paid in respect of a transaction to discharge any amount owed by the purchaser. If all fees, commissions, premiums, bid prices and other sums due to us from the purchaser are not paid promptly as provided in these Conditions of Sale, we reserve the right to impose a finance charge equal to 1.5% per month (or, if lower, the maximum nonusurious rate of interest permitted by applicable law), on all amounts due to us beginning on the 31st day following the sale until payment is received, in addition to other remedies available to us by law.

3. We reserve the right to withdraw any property and to divide and combine lots at any time before such property's auction. Unless otherwise announced by the auctioneer at the time of sale, all bids are per lot as numbered in the catalog and no lots shall be divided or combined for sale.

4. We reserve the right to reject a bid from any bidder, to split any bidding increment, and to advance the bidding in any manner the auctioneer may decide. In the event of any dispute between bidders, or in the event the auctioneer doubts the validity of any bid, the auctioneer shall have sole and final discretion either to determine the successful bidder or to re-offer and resell the article in dispute. If any dispute arises after the sale, our sales records shall be conclusive in all respects.

5. If we are prevented by fire, theft or any other reason whatsoever from delivering any property to the purchaser or a sale otherwise cannot be completed, our liability shall be limited to the sum actually paid therefor by the purchaser and shall in no event include any compensatory, incidental or consequential damages.

6. If a lot is offered subject to a reserve, we may implement such reserve by bidding on behalf of the consignor, whether by opening bidding or continuing bidding in response to other bidders until reaching the reserve. If we have an interest in an offered lot and the proceeds therefrom other than our commissions, we may bid therefor to protect such interest. CONSIGNORS ARE NOT ALLOWED TO BID ON THEIR OWN ITEMS.

7. All statements contained in the catalog or in any bill of sale, condition report, invoice or elsewhere as to authorship, period, culture, source, origin, measurement, quality, rarity, provenance, importance, exhibition and literature of historical relevance, or physical condition ARE QUALIFIED STATEMENTS OF OPINION AND NOT REPRESENTATIONS OR WARRANTIES. No employee or agent of Bonhams is authorized to make on our behalf or on that of the consignor any representation or warranty, oral or written, with respect to any property.

8. All purchased property shall be removed from the premises at which the sale is conducted by the date(s) and time(s) set forth in the "Buyer's Guide" portion of the catalog. If not so removed, daily storage fees will be payable to us by the purchaser as set forth therein. We reserve the right to transfer property not so removed to an offsite warehouse at the purchaser's risk and expense, as set forth in more detail in the "Buyer's Guide." Accounts must be settled in full before property will be released. Packing and handling of purchased lots are the responsibility of the purchaser. Bonhams can provide packing and shipping services for certain items as noted in the "Buyer's Guide" section of the catalog.

9. The copyright in the text of the catalog and the photographs, digital images and illustrations of lots in the catalog belong to Bonhams or its licensors. You will not reproduce or permit anyone else to reproduce such text, photographs, digital images or illustrations without our prior written consent.

10. These Conditions of Sale shall bind the successors and assigns of all bidders and purchasers and inure to the benefit of our successors and assigns. No waiver, amendment or modification of the terms hereof (other than posted notices or oral announcements during the sale) shall bind us unless specifically stated in writing and signed by us. If any part of these Conditions of Sale is for any reason invalid or unenforceable, the rest shall remain valid and enforceable.

11. These Conditions of Sale and the purchaser's and our respective rights and obligations hereunder are governed by the laws of the State of California. By bidding at an auction, each purchaser and bidder agrees to be bound by these Conditions of Sale. Any dispute, controversy or claim arising out of or relating to this agreement, or the breach, termination or validity thereof, brought by or against Bonhams (but not including claims brought against the consignor by the purchaser of lots consigned hereunder) shall be resolved by the procedures set forth below.

SALES AND USE TAX

New York sales tax is charged on the hammer price, buyer's premium and any other applicable charges on any property collected or delivered in New York State, regardless of the state or country in which the purchaser resides or does business. Purchasers who make direct arrangements for collection by a shipper who is considered a "private" or "contract" carrier by the New York Department of Taxation and Finance will be charged New York sales tax, regardless of the destination of the property. Property collected for delivery to a destination outside of New York by a shipper who is considered a "common carrier" by the New York Department of Taxation and Finance (e.g. United States Postal Service, United Parcel Service, and FedEx) is not subject to New York sales tax, but if it is delivered into any state in which Bonhams is registered or otherwise conducts business sufficient to establish a nexus, Bonhams may be required by law to collect and remit the appropriate sales tax in effect in such state. Property collected for delivery outside of the United States by a freight-forwarder who is registered with the Transportation Security Administration ("TSA") is not subject to New York sales tax.

MEDIATION AND ARBITRATION PROCEDURES

(a) Within 30 days of written notice that there is a dispute, the parties or their authorized and empowered representatives shall meet by telephone and/or in person to mediate their differences. If the parties agree, a mutually acceptable mediator shall be selected and the parties will equally share such mediator's fees. The mediator shall be a retired judge or an attorney familiar with commercial law and trained in or qualified by experience in handling mediations. Any communications made during the mediation process shall not be admissible in any subsequent arbitration, mediation or judicial proceeding. All proceedings and any resolutions thereof shall be confidential, and the terms governing arbitration set forth in paragraph (c) below shall govern.

(b) If mediation does not resolve all disputes between the parties, or in any event no longer than 60 days after receipt of the written notice of dispute referred to above, the parties shall submit the dispute for binding arbitration before a single neutral arbitrator. Such arbitrator shall be a retired judge or an attorney familiar with commercial law and trained in or qualified by experience in handling arbitrations. Such arbitrator shall make all appropriate disclosures required by law. The arbitrator shall be drawn from a panel of a national arbitration service agreed to by the parties, and shall be selected as follows: (i) If the national arbitration service has specific rules or procedures, those rules or procedures shall be followed; (ii) If the national arbitration service does not

have rules or procedures for the selection of an arbitrator, the arbitrator shall be an individual jointly agreed to by the parties. If the parties cannot agree on a national arbitration service, the arbitration shall be conducted by the American Arbitration Association, and the arbitrator shall be selected in accordance with the Rules of the American Arbitration Association. The arbitrator's award shall be in writing and shall set forth findings of fact and legal conclusions.

(c) Unless otherwise agreed to by the parties or provided by the published rules of the national arbitration service:

(i) the arbitration shall occur within 60 days following the selection of the arbitrator;

(ii) the arbitration shall be conducted in the designated location, as follows: (A) in any case in which the subject auction by Bonhams took place or was scheduled to take place in the State of New York or Connecticut or the Commonwealth of Massachusetts, the arbitration shall take place in New York City, New York; (B) in all other cases, the arbitration shall take place in the city of San Francisco, California; and

(iii) discovery and the procedure for the arbitration shall be as follows:

(A) All arbitration proceedings shall be confidential;

(B) The parties shall submit written briefs to the arbitrator no later than 15 days before the arbitration commences;

(C) Discovery, if any, shall be limited as follows: (I) Requests for no more than 10 categories of documents, to be provided to the requesting party within 14 days of written request therefor; (II) No more than two (2) depositions per party, provided however, the deposition(s) are to be completed within one (1) day; (III) Compliance with the above shall be enforced by the arbitrator in accordance with California law;

(D) Each party shall have no longer than eight (8) hours to present its position. The entire hearing before the arbitrator shall not take longer than three (3) consecutive days;

(E) The award shall be made in writing no more than 30 days following the end of the proceeding. Judgment upon the award rendered by the arbitrator may be entered by any court having jurisdiction thereof.

To the fullest extent permitted by law, and except as

required by applicable arbitration rules, each party shall bear its own attorneys' fees and costs in connection with the proceedings and shall share equally the fees and expenses of the arbitrator.

LIMITED RIGHT OF RESCISSION

If within one (1) year from the date of sale, the original purchaser (a) gives written notice to us alleging that the identification of Authorship (as defined below) of such lot as set forth in the **BOLD TYPE** heading of the catalog description of such lot (as amended by any saleroom notices or verbal announcements during the sale) is not substantially correct based on a fair reading of the catalog (including the terms of any glossary contained therein), and (b) within 10 days after such notice returns the lot to us in the same condition as at the time of sale, and (c) establishes the allegation in the notice to our satisfaction (including by providing one or more written opinions by recognized experts in the field, as we may reasonably require), then the sale of such lot will be rescinded and, unless we have already paid to the consignor monies owed him in connection with the sale, the original purchase price will be refunded.

If, prior to receiving such notice from the original purchaser alleging such defect, we have paid the consignor monies owed him in connection with the sale, we shall pay the original purchaser the amount of our commissions, any other sale proceeds to which we are entitled and applicable taxes received from the purchaser on the sale and make demand on the consignor to pay the balance of the original purchase price to the original purchaser. Should the consignor fail to pay such amount promptly, we may disclose the identity of the consignor and assign to the original purchaser our rights against the consignor with respect to the lot the sale of which is sought to be rescinded. Upon such disclosure and assignment, any liability of Bonhams as consignor's agent with respect to said lot shall automatically terminate.

The foregoing limited right of rescission is available to the original purchaser only and may not be assigned to or relied upon by any subsequent transferee of the property sold. The purchaser hereby accepts the benefit of the consignor's warranty of title and other representations and warranties made by the consignor for the purchaser's benefit. Nothing in this section shall be construed as an admission by us of any representation of fact, express or implied, obligation or responsibility with respect to any lot. **THE PURCHASER'S SOLE AND**

EXCLUSIVE REMEDY AGAINST BONHAMS FOR ANY REASON WHATSOEVER IS THE LIMITED RIGHT OF RESCISSION DESCRIBED IN THIS SECTION.

"Authorship" means only the identity of the creator, the period, culture and source or origin of the lot, as the case may be, as set forth in the **BOLD TYPE** heading of the print catalog entry. The right of rescission does not extend to: (a) works of art executed before 1870 (unless these works are determined to be counterfeits created since 1870), as this is a matter of current scholarly opinion which can change; (b) titles, descriptions, or other identification of offered lots, which information normally appears in lower case type below the **BOLD TYPE** heading identifying the Authorship; (c) Authorship of any lot where it was specifically mentioned that there exists a conflict of specialist or scholarly opinion regarding the Authorship of the lot at the time of sale; (d) Authorship of any lot which as of the date of sale was in accordance with the then generally-accepted opinion of scholars and specialists regarding the same; or (e) the identification of periods or dates of creation in catalog descriptions which may be proven inaccurate by means of scientific processes that are not generally accepted for use until after publication of the catalog in which the property is offered or that were unreasonably expensive or impractical to use at the time of such publication.

LIMITATION OF LIABILITY

EXCEPT AS EXPRESSLY PROVIDED ABOVE, ALL PROPERTY IS SOLD "AS IS." NEITHER BONHAMS NOR THE CONSIGNOR MAKES ANY REPRESENTATION OR WARRANTY, EXPRESS OR IMPLIED, AS TO THE MERCHANTABILITY, FITNESS OR CONDITION OF THE PROPERTY OR AS TO THE CORRECTNESS OF DESCRIPTION, GENUINENESS, ATTRIBUTION, PROVENANCE OR PERIOD OF THE PROPERTY OR AS TO WHETHER THE PURCHASER ACQUIRES ANY COPYRIGHTS OR OTHER INTELLECTUAL PROPERTY RIGHTS IN LOTS SOLD OR AS TO WHETHER A WORK OF ART IS SUBJECT TO THE ARTIST'S MORAL RIGHTS OR OTHER RESIDUAL RIGHTS OF THE ARTIST. THE PURCHASER EXPRESSLY ACKNOWLEDGES AND AGREES THAT IN NO EVENT SHALL BONHAMS BE LIABLE FOR ANY DAMAGES INCLUDING, WITHOUT LIMITATION, ANY COMPENSATORY, INCIDENTAL OR CONSEQUENTIAL DAMAGES.

SELLER'S GUIDE

SELLING AT AUCTION

Bonhams can help you every step of the way when you are ready to sell art, antiques and collectible items at auction. Our regional offices and representatives throughout the US are available to service all of your needs. Should you have any further questions, please visit our website at www.bonhams.com/us for more information or call our Client Services Department at +1 (212) 644 9001.

AUCTION ESTIMATES

The first step in the auction process is to determine the auction value of your property. Bonhams' world-renowned specialists will evaluate your special items at no charge and in complete confidence. You can obtain an auction estimate in many ways:

- Attend one of our Auction Appraisal Events held regularly at our galleries and in other major metropolitan areas. The updated schedule for Bonhams Auction Appraisal Events is available at www.bonhams.com/us.
- Call our Client Services Department to schedule a private appointment at one of our galleries. If you have a large collection, our specialists can travel, by appointment, to evaluate your property on site.
- Send clear photographs to us of each individual item, including item dimensions and other pertinent information with each picture. Photos should be sent to Bonhams' address in envelopes marked

as "photo auction estimate". Alternatively, you can submit your request using our online form at www.bonhams.com/us. Digital images may be attached to the form. Please limit your images to no more than five (5) per item.

CONSIGNING YOUR PROPERTY

After you receive an estimate, you may consign your property to us for sale in the next appropriate auction. Our staff assists you throughout the process, arranging transportation of your items to our galleries (at the consignor's expense), providing a detailed inventory of your consignment, and reporting the prices realized for each lot. We provide secure storage for your property in our warehouses and all items are insured throughout the auction process. You will receive payment for your property approximately 35 days after completion of sale.

Sales commissions vary with the potential auction value of the property and the particular auction in which the property is offered. Please call us for commission rates.

PROFESSIONAL APPRAISAL SERVICES

Bonhams' specialists conduct insurance and fair market value appraisals for private collectors, corporations, museums, fiduciaries and government entities on a daily basis. Insurance appraisals, used for insurance purposes, reflect the cost of replacing property in today's retail market. Fair market value appraisals are used for estate,

tax and family division purposes and reflect prices paid by a willing buyer to a willing seller.

When we conduct a private appraisal, our specialists will prepare a thorough inventory listing of all your appraised property by category. Valuations, complete descriptions and locations of items are included in the documentation.

Appraisal fees vary according to the nature of the collection, the amount of work involved, the travel distance, and whether the property is subsequently consigned for auction.

Our appraisers are available to help you anywhere and at any time. Please call our Client Services Department to schedule an appraisal.

ESTATE SERVICES

Since 1865, Bonhams has been serving the needs of fiduciaries – lawyers, trust officers, accountants and executors – in the disposition of large and small estates. Our services are specially designed to aid in the efficient appraisal and disposition of fine art, antiques, jewelry, and collectibles. We offer a full range of estate services, ranging from flexible financial terms to tailored accounting for heirs and their agents to world-class marketing and sales support.

For more information or to obtain a detailed Trust and Estates package, please visit our website at www.bonhams.com/us or contact our Client Services Department.

BUYER'S GUIDE

BIDDING & BUYING AT AUCTION

Whether you are an experienced bidder or an enthusiastic novice, auctions provide a stimulating atmosphere unlike any other. Bonhams previews and sales are free and open to the public. As you will find in these directions, bidding and buying at auction is easy and exciting. Should you have any further questions, please visit our website at www.bonhams.com or call our Client Services Department at +1 (212) 644 9001.

Catalogs

Before each auction we publish illustrated catalogs. Our catalogs provide descriptions and estimated values for each "lot." A lot may refer to a single item or to a group of items auctioned together. The catalogs also include the dates and the times for the previews and auctions. We offer our catalogs by subscription or by single copy. For information on subscribing to our catalogs, you may refer to the subscription form in this catalog, call our Client Services Department, or visit our website at www.bonhams.com/us.

Previews

Auction previews are your chance to inspect each lot prior to the auction. We encourage you to look closely and examine each object on which you may want to bid so that you will know as much as possible about it. Except as expressly set forth in the Conditions of Sale, items are sold "as is" and with all faults; illustrations in our catalogs, website and other materials are provided for identification only. At the previews, our staff is always available to answer your questions and guide you through the auction process. Condition reports may be available upon request.

Estimates

Bonhams catalogs include low and high value estimates for each lot, exclusive of the buyer's premium and tax. The estimates are provided as an approximate guide to current market value based primarily on previous auction results for comparable pieces, and should not be interpreted as a representation or prediction of actual selling prices. They are determined well in advance of a sale and are subject to revision. Please contact us should you have any questions about value estimates.

Reserves

Unless indicated by the σ symbol next to the lot number, which denotes no reserve, all lots in the catalog are subject to a reserve. The reserve is the minimum auction price that the consignor is willing to accept for a lot. This amount is confidential and does not exceed the low estimate value.

Auction House's Interest in Property Offered at Auction

On occasion, Bonhams may offer property in which it has an ownership interest in whole or in part or otherwise has an economic interest. Such property, if any, is identified in the catalog with a \blacktriangle symbol next to the lot number(s).

Bonhams may also offer property for a consignor that has been guaranteed a minimum price for its property by Bonhams or jointly by Bonhams and a third party. Bonhams and any third parties providing a guarantee may benefit financially if the guaranteed property is sold successfully and may incur a financial loss if its sale is not successful. Such property, if any, is identified in the catalog with a \circ symbol next to the lot number(s).

Bidding at Auction

At Bonhams, you can bid in many ways: in person, via absentee bid, over the phone, or via Bonhams' live online bidding facility. Absentee bids can be submitted in person, online, via fax or via email.

Valid Bonhams client accounts are required to participate in bidding activity. You can obtain registration information online, at the reception desk or by calling our Client Services Department.

By bidding at auction, whether in person or by agent, by absentee bid, telephone, online or other means, the buyer or bidder agrees to be bound by the Conditions of Sale.

Lots are auctioned in consecutive numerical order as they appear in the catalog. Bidding normally begins below the low estimate. The auctioneer will accept bids from interested parties present in the saleroom, from telephone bidders, and

from absentee bidders who have left written bids in advance of the sale. The auctioneer may also execute bids on behalf of the consignor by placing responsive or consecutive bids for a lot up to the amount of the reserve, but never above it.

We assume no responsibility for failure to execute bids for any reason whatsoever.

In Person

If you are planning to bid at auction for the first time, you will need to register at the reception desk in order to receive a numbered bid card. To place a bid, hold up your card so that the auctioneer can clearly see it. Decide on the maximum auction price that you wish to pay, exclusive of buyer's premium and tax, and continue bidding until your bid prevails or you reach your limit. If you are the successful bidder on a lot, the auctioneer will acknowledge your paddle number and bid amount.

Absentee Bids

As a service to those wishing to place bids, we may at our discretion accept bids without charge in advance of auction online or in writing on bidding forms available from us. "Buy" bids will not be accepted; all bids must state the highest bid price the bidder is willing to pay. Our auction staff will try to bid just as you would, with the goal of obtaining the item at the lowest bid price possible. In the event identical bids are submitted, the earliest bid submitted will take precedence. Absentee bids shall be executed in competition with other absentee bids, any applicable reserve, and bids from other auction participants. A friend or agent may place bids on your behalf, provided that we have received your written authorization prior to the sale. Absentee bid forms are available in our catalogs, online at www.bonhams.com/us, at offsite auction locations, and at our San Francisco, Los Angeles and New York galleries.

By Telephone

Under special circumstances, we can arrange for you to bid by telephone. To arrange for a telephone bid, please contact our Client Services Department a minimum of 24 hours prior to the sale.

Online

We offer live online bidding for most auctions and accept absentee bids online for all our auctions. Please visit www.bonhams.com/us for details.

Bid Increments

Bonhams generally uses the following increment multiples as bidding progresses:

\$50-200.....	by \$10s
\$200-500.....	by \$20/50/80s
\$500-1,000.....	by \$50s
\$1,000-2,000.....	by \$100s
\$2,000-5,000.....	by \$200/500/800s
\$5,000-10,000.....	by \$500s
\$10,000-20,000.....	by \$1,000s
\$20,000-50,000.....	by \$2,000/5,000/8,000s
\$50,000-100,000.....	by \$5,000s
\$100,000-200,000.....	by \$10,000s
above \$200,000.....	at auctioneer's discretion

The auctioneer may split or reject any bid at any time at his or her discretion as outlined in the Conditions of Sale.

Currency Converter

Solely for the convenience of bidders, a currency converter may be provided at Bonhams' auctions. The rates quoted for conversion of other currencies to U.S. Dollars are indications only and should not be relied upon by a bidder, and neither Bonhams nor its agents shall be responsible for any errors or omissions in the operation or accuracy of the currency converter.

Buyer's Premium

A buyer's premium is added to the winning bid price of each individual lot purchased, at the rates set forth in the Conditions of Sale. The winning bid price plus the premium constitute the purchase price for the lot. Applicable sales taxes are computed based on this figure, and the total becomes your final purchase price.

Unless specifically illustrated and noted, fine art frames are not included in the estimate or purchase price. Bonhams accepts no liability for damage or loss to frames during storage or shipment.

All sales are final and subject to the Conditions of Sale found in our catalogs, on our website, and available at the reception desk.

Payment

All buyers are asked to pay and pick up by 3pm on the business day following the auction. Payment may be made to Bonhams by cash, checks drawn on a U.S. bank, money order, wire transfer, or by Visa, MasterCard, American Express or Discover credit or charge card or debit card. All items must be paid for within 5 business days of the sale. Please note that payment by personal or business check may result in property not being released until purchase funds clear our bank. For payments sent by mail, please remit to Cashier Department, 220 San Bruno Avenue, San Francisco, CA 94103.

Sales Tax

Residents of states listed in Paragraph 1 of the Conditions of Sale must pay applicable sales tax. Other state or local taxes (or compensation use taxes) may apply. Sales tax will be automatically added to the invoice unless a valid resale number has been furnished or the property is shipped via common carrier to destinations outside the states listed in the Conditions of Sale. If you wish to use your resale license please contact Cashiers for our form.

Shipping & Removal

Bonhams can accommodate shipping for certain items. Please contact our Cashiers Department for more information or to obtain a quote. Carriers are not permitted to deliver to PO boxes.

International buyers are responsible for all import/export customs duties and taxes. An invoice stating the actual purchase price will accompany all international purchases.

Collection of Purchases

Please arrange for the packing and transport of your purchases prior to collection at our office. If you are sending a third party shipper, please request a release form from us and return it to +1 (212) 644 9009 prior to your scheduled pickup. To schedule collection of purchases, please call +1 (212) 644 9001.

Auction Results

All you need is a touch-tone telephone and the lot number. Auction results are usually available on the next business day following the sale or online at www.bonhams.com/us.

IMPORTANT NAMES & NOTICES

DIAMONDS, COLORED STONES & PEARLS

The Jewelry department of Bonhams & Butterfields recognizes that there are many various forms of treatments and enhancements used in diamonds and colored stones in order to improve their appearance and or color. Techniques such as heat treatment have been used to improve the color and transparency of both sapphires and rubies in addition to other gemstones. Techniques such as oiling have been used to enhance the clarity of emeralds while dyeing has been used to effect the color of jade. Techniques such as heat treatment, oiling, resin impregnation, irradiation, color diffusion, dyeing, fracture filling, and HTHP are just a few off the techniques that are in use today. Prospective buyers are therefore reminded that unless otherwise noted in our catalog description it must be assumed that some form of enhancement may have been used and that such treatment may not always be permanent or detectable and that our estimates have taken such possibilities into account. As a matter of policy, Bonhams & Butterfields endeavors to obtain certificates from recognized gemological laboratories when such certificates are deemed crucial to the authenticity of a gemstone. It is not possible however to gain certificates for all items offered for sale and it is therefore recommended where there is no mention of a certificate that all prospective buyers consult with one of our department specialists prior to purchase of such items.

PLEASE NOTE: A number of laboratories issue certificates that give more detailed descriptions of gemstones, however there may not be consensus between different laboratories on the degrees, or types of treatment for any particular gemstone. Neither is there necessarily consensus between different laboratories, or private appraisers, on the grading of diamonds. All gemstone weights are approximations only and although an independent laboratory grading may be used in the catalog text, we cannot guarantee such gradings.

Images shown may appear smaller or larger than actual size.

Although we endeavor to mention in our descriptions significant defects, needed repairs, absent stones and the like, **WE DO NOT GUARANTEE THAT THE DESCRIPTIONS ARE COMPREHENSIVE.** Please examine all lots carefully. It is the responsibility of the prospective bidder, or his agent, to determine the condition of lots during the preview. Condition reports have been created for most lots in this auction, and are available upon request. Please contact the Jewelry department at least two days prior to the sale date for additional information.

NOTICE REGARDING BURMESE JADEITE AND RUBIES

Current law dictates that jadeite and rubies of Burmese origin and any articles of jewelry containing jadeite or rubies of Burmese origin may not be imported into the U.S. Certification that such jadeite or rubies were not mined in or extracted from Burma is required for importation of them into the U.S.

It is the responsibility of the buyer to investigate any applicable restrictions on purchased property and to obtain any export or import licenses and/or certificates as well as any other required documentation before shipping. The buyer's inability to export or import any such items or to do so timely shall not serve as the basis for any cancellation or rescission of the sale or any delay in payment. Prospective buyers who are uncertain as to whether a lot is subject to these restrictions or any other restrictions on importation or exportation are advised to consult with the specialist department in which the property is offered.

REGULATED SPECIES MATERIALS AND CITES PERMITS

The export of a lot from the United States or import into certain countries may be subject to export or import regulations, licensure and/or other restrictions; in particular, lots containing plant or animal materials such as ivory, rhinoceros horn, tortoiseshell, coral, whalebone or certain types of woods, irrespective of age or value, may require the granting of one or more export or import licenses

or certificates, or may be banned from import altogether by some countries. Moreover, the ability to obtain an export license or certificate does not insure the ability to obtain an import license or certificate in another country. Lots that contain such regulated species materials may also not be eligible for exportation or for re-importation into the United States if they are not at least 100 years of age, and, under current law, lots containing African Elephant Ivory may no longer be re-imported into the United States regardless of age. In addition, resales of lots containing certain regulated species materials may be subject to restrictions in some jurisdictions.

Lots noted in the catalog with a **Y** next to the lot number contain one or more such regulated plant or animal materials. **It is the buyer's responsibility to investigate any such restrictions and to obtain any relevant export or import licenses. Please note that this process is governed by local authorities and may take considerable time. Regardless of any delay in the obtaining of an export or import license or certificate or denial of a license's or certificate's issuance, purchased lots shall be paid for in accordance with the Conditions of Sale, and any such delay or denial shall not serve as the basis for cancellation of any sale.** Prospective buyers are advised to obtain information from the relevant regulatory authorities regarding export and import restrictions, requirements, and costs prior to bidding.

Prospective buyers should also check with their local (e.g. state) regulatory authorities regarding any local restrictions and/or permit requirements that may apply with respect to purchases of regulated species materials, including without limitation purchases of items containing elephant ivory or rhino horn. For example, we are advised that New York buyers of any lot containing elephant or mammoth ivory or rhino horn will be responsible for obtaining a New York State permit before taking possession of the lot within New York State, and that the State of New Jersey has banned the import of items containing elephant or marine mammal ivory or rhino horn into that state.

Upon request, Bonhams can refer the purchaser to a third party agent to assist the purchaser in attempting to obtain the appropriate licenses and/or certificates. However, there is no assurance that any necessary licenses or certificates can be obtained. Please contact the Specialist Department for a suggested list of shipping agents prior to placing a bid if you are uncertain as to whether a lot is subject to export/import license or certificate requirements or related restrictions.

WATCHES

Although we endeavor to mention in our descriptions significant defects, needed repairs, absent stones and the like, **WE DO NOT GUARANTEE THAT THE DESCRIPTIONS ARE COMPREHENSIVE.** Please examine all watches carefully. It is the responsibility of the prospective bidder, or his agent, to determine the condition of watches during the preview. Except as expressly set forth in the Conditions of Sale, all watches are sold "as is". We do not guarantee the accuracy or operation of any watch function such as timekeeping, chronograph, calendar, repeater or register.

We make no judgments as to whether diamond dials or diamond bezels originated at the factory or are later additions.

Auction Registration Form

(Attendee / Absentee / Online / Telephone Bidding)

Please circle your bidding method above.

--	--	--	--

Paddle number (for office use only)

General Notice: This sale will be conducted in accordance with Bonhams Conditions of Sale, and your bidding and buying at the sale will be governed by such terms and conditions. Please read the Conditions of Sale in conjunction with the Buyer's Guide relating to this sale and other published notices and terms relating to bidding. Payment by personal or business check may result in your property not being released until purchase funds clear our bank. Checks must be drawn on a U.S. bank.

Notice to Absentee Bidders: In the table below, please provide details of the lots on which you wish to place bids at least 24 hours prior to the sale. Bids will be rounded down to the nearest increment. Please refer to the Buyer's Guide in the catalog for further information relating to instructions to Bonhams to execute absentee bids on your behalf. Bonhams will endeavor to execute bids on your behalf but will not be liable for any errors or non-executed bids.

Notice to First Time Bidders: New clients are requested to provide photographic proof of ID - passport, driving license, ID card, together with proof of address - utility bill, bank or credit card statement etc. Corporate clients should also provide a copy of their articles of association / company registration documents, together with a letter authorizing the individual to bid on the company's behalf. Failure to provide this may result in your bids not being processed. For higher value lots you may also be asked to provide a bankers reference.

Notice to online bidders: If you have forgotten your username and password for www.bonhams.com, please contact Client Services.

If successful

- I will collect the purchases myself
- Please contact me with a shipping quote (if applicable)
- I will arrange a third party to collect my purchase(s)

Please email or fax the completed Registration Form and requested information to:

Bonhams Client Services Department
 580 Madison Avenue
 New York, New York 10022
 Tel +1 (212) 644 9001
 Fax +1 (212) 644 9009
bids.us@bonhams.com

Bonhams

Sale title: Fine Jewelry		Sale date: Monday December 3, 2018	
Sale no. 24868		Sale venue: New York	
General Bid Increments:			
\$10 - 200by 10s		\$10,000 - 20,000by 1,000s	
\$200 - 500by 20 / 50 / 80s		\$20,000 - 50,000by 2,000 / 5,000 / 8,000s	
\$500 - 1,000by 50s		\$50,000 - 100,000by 5,000s	
\$1,000 - 2,000by 100s		\$100,000 - 200,000by 10,000s	
\$2,000 - 5,000by 200 / 500 / 800s		above \$200,000at the auctioneer's discretion	
\$5,000 - 10,000by 500s		The auctioneer has discretion to split any bid at any time.	
Customer Number		Title	
First Name		Last Name	
Company name (to be invoiced if applicable)			
Address			
City		County / State	
Post / Zip code		Country	
Telephone mobile		Telephone daytime	
Telephone evening		Fax	
Telephone bidders: indicate primary and secondary contact numbers by writing ① or ② next to the telephone number.			
E-mail (in capitals) _____			
By providing your email address above, you authorize Bonhams to send you marketing materials and news concerning Bonhams and partner organizations. Bonhams does not sell or trade email addresses.			
I am registering to bid as a private client <input type="checkbox"/>		I am registering to bid as a trade client <input type="checkbox"/>	
Resale: please enter your resale license number here _____ We may contact you for additional information.			

SHIPPING	
Shipping Address (if different than above):	
Address: _____	Country: _____
City: _____	Post/ZIP code: _____

Please note that all telephone calls are recorded.

Type of bid (A-Absentee, T-Telephone)	Lot no.	Brief description (In the event of any discrepancy, lot number and not lot description will govern.) If you are bidding online there is no need to complete this section.	MAX bid in US\$ (excluding premium and applicable tax) Emergency bid for telephone bidders only*

You instruct us to execute each absentee bid up to the corresponding bid amount indicated above.

* Emergency Bid: A maximum bid (exclusive of Buyer's Premium and tax) to be executed by Bonhams **only** if we are unable to contact you by telephone or should the connection be lost during bidding.

BY SIGNING THIS FORM YOU AGREE THAT YOU HAVE READ AND UNDERSTAND OUR CONDITIONS OF SALE AND SHALL BE LEGALLY BOUND BY THEM, AND YOU AGREE TO PAY THE BUYER'S PREMIUM, ANY APPLICABLE TAXES, AND ANY OTHER CHARGES MENTIONED IN THE BUYER'S GUIDE OR CONDITIONS OF SALE. THIS AFFECTS YOUR LEGAL RIGHTS.	
Your signature: _____	Date: _____





Bonhams
580 Madison Avenue
New York, New York 10022

+1 (212) 644 9001
bonhams.com

AUCTIONEERS SINCE 1793